

## Product datasheet for **TA808488M**

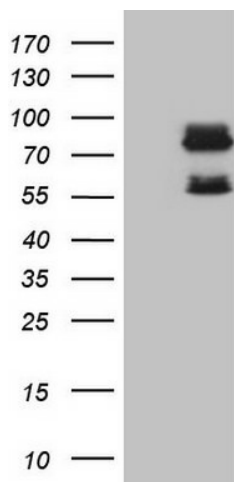
### SCMH1 Mouse Monoclonal Antibody [Clone ID: OTI6F10]

#### Product data:

Product Type:	Primary Antibodies
Clone Name:	OTI6F10
Applications:	WB
Recommended Dilution:	WB 1:2000
Reactivity:	Human, Mouse, Rat
Host:	Mouse
Isotype:	IgG1
Clonality:	Monoclonal
Immunogen:	Human recombinant protein fragment corresponding to amino acids 1-309 of human SCMH1(NP_036368) produced in E.coli.
Formulation:	PBS (pH 7.3) containing 1% BSA, 50% glycerol and 0.02% sodium azide.
Concentration:	1 mg/ml
Purification:	Purified from mouse ascites fluids or tissue culture supernatant by affinity chromatography (protein A/G)
Conjugation:	Unconjugated
Storage:	Store at -20°C as received.
Stability:	Stable for 12 months from date of receipt.
Predicted Protein Size:	65.9 kDa
Gene Name:	sex comb on midleg homolog 1 (Drosophila)
Database Link:	<a href="#">NP_036368</a> <a href="#">Entrez Gene 22955 Human</a> <a href="#">Q96GD3</a>
Synonyms:	Scml3
Protein Families:	Transcription Factors

[View online »](#)

## Product images:



HEK293T cells were transfected with the pCMV6-ENTRY control (Left lane) or pCMV6-ENTRY SCMH1 ([RC200193], Right lane) cDNA for 48 hrs and lysed. Equivalent amounts of cell lysates (5 ug per lane) were separated by SDS-PAGE and immunoblotted with anti-SCMH1 (1:2000). Positive lysates [LY415889] (100ug) and [LC415889] (20ug) can be purchased separately from OriGene.