

Product datasheet for **TA808486BM**

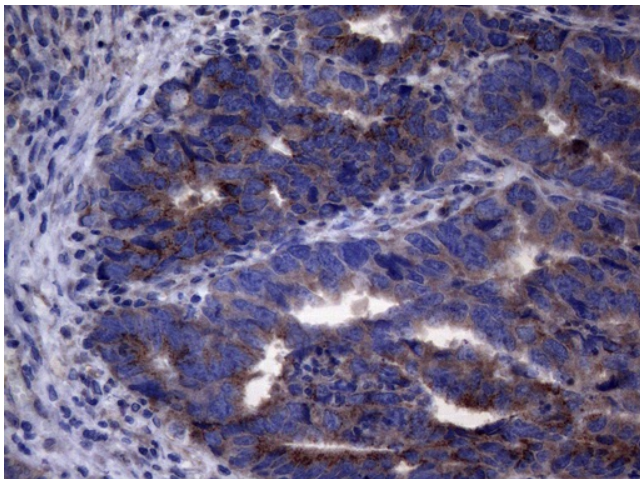
C11orf17 (AKIP1) Mouse Monoclonal Antibody (HRP conjugated) [Clone ID: OTI2E4]

Product data:

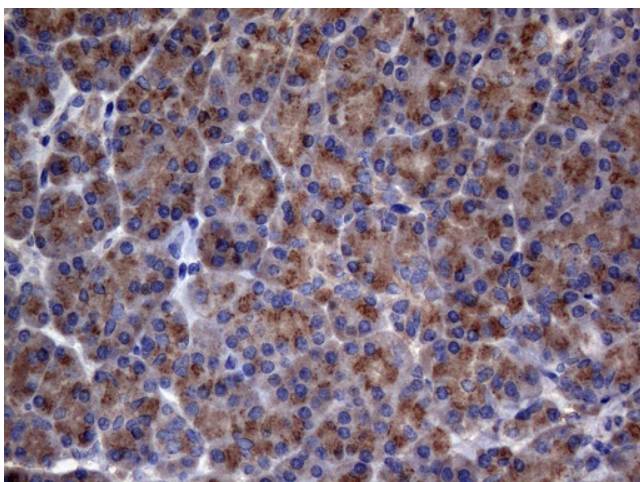
Product Type:	Primary Antibodies
Clone Name:	OTI2E4
Applications:	IHC
Recommended Dilution:	IHC 1:150
Reactivity:	Human
Host:	Mouse
Isotype:	IgG1
Clonality:	Monoclonal
Immunogen:	Full length human recombinant protein of human AKIP1 (NP_878904) produced in E.coli.
Formulation:	PBS (pH 7.3) containing 1% BSA, 50% glycerol.
Concentration:	0.5 mg/ml
Purification:	Purified from mouse ascites fluids or tissue culture supernatant by affinity chromatography (protein A/G)
Conjugation:	HRP
Storage:	Store at -20°C as received.
Stability:	Stable for 12 months from date of receipt.
Predicted Protein Size:	22.9 kDa
Gene Name:	A-kinase interacting protein 1
Database Link:	NP_878904 Entrez Gene 56672 Human Q9NQ31
Background:	This gene encodes a nuclear protein that interacts with protein kinase A catalytic subunit, and regulates the effect of the cAMP-dependent protein kinase signaling pathway on the NF-kappa-B activation cascade. Alternatively spliced transcript variants have been described for this gene. [provided by RefSeq, Oct 2011]
Synonyms:	BCA3; C11orf17



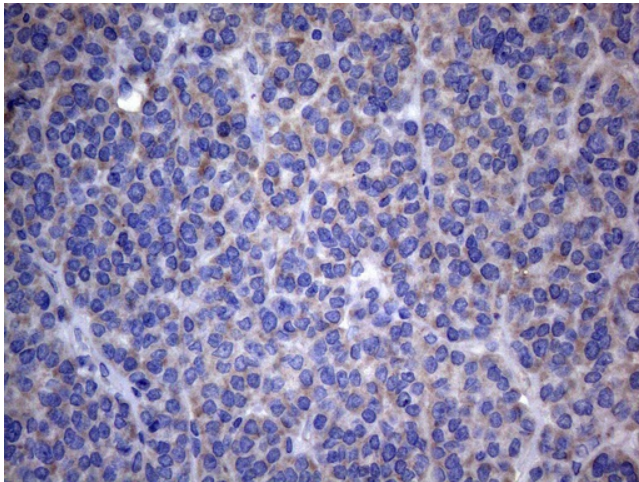
[View online »](#)

Product images:

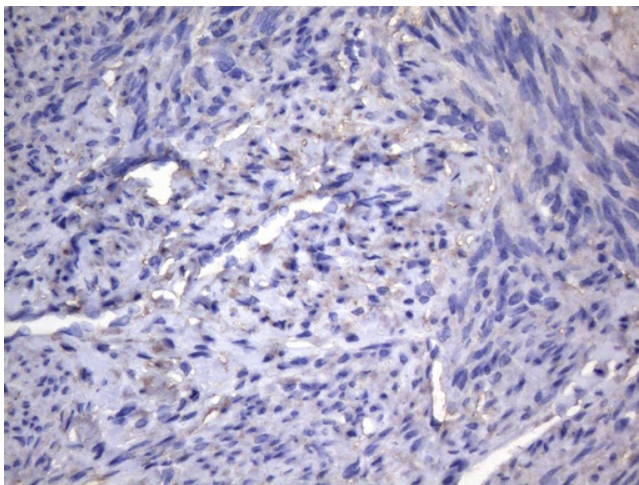
Immunohistochemical staining of paraffin-embedded Adenocarcinoma of Human colon tissue using anti-AKIP1 mouse monoclonal antibody. (Heat-induced epitope retrieval by 1mM EDTA in 10mM Tris buffer (pH8.5) at 120°C for 3min, [TA808486]) (1:150)



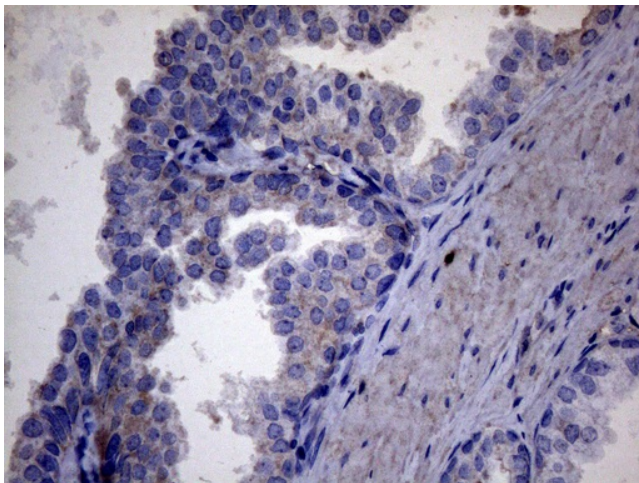
Immunohistochemical staining of paraffin-embedded Human pancreas tissue within the normal limits using anti-AKIP1 mouse monoclonal antibody. (Heat-induced epitope retrieval by 1mM EDTA in 10mM Tris buffer (pH8.5) at 120°C for 3min, [TA808486]) (1:150)



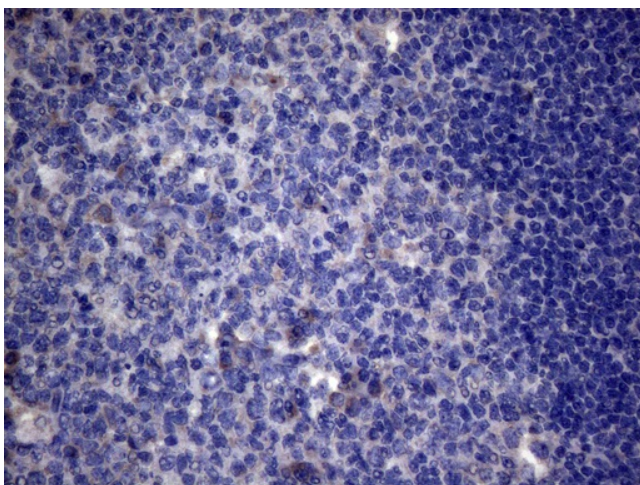
Immunohistochemical staining of paraffin-embedded Carcinoma of Human thyroid tissue using anti-AKIP1 mouse monoclonal antibody. (Heat-induced epitope retrieval by 1mM EDTA in 10mM Tris buffer (pH8.5) at 120°C for 3min, [TA808486]) (1:150)



Immunohistochemical staining of paraffin-embedded Human endometrium tissue within the normal limits using anti-AKIP1 mouse monoclonal antibody. (Heat-induced epitope retrieval by 1mM EDTA in 10mM Tris buffer (pH8.5) at 120°C for 3min, [TA808486]) (1:150)



Immunohistochemical staining of paraffin-embedded Carcinoma of Human prostate tissue using anti-AKIP1 mouse monoclonal antibody. (Heat-induced epitope retrieval by 1mM EDTA in 10mM Tris buffer (pH8.5) at 120°C for 3min, [TA808486]) (1:150)



Immunohistochemical staining of paraffin-embedded Human tonsil within the normal limits using anti-AKIP1 mouse monoclonal antibody. (Heat-induced epitope retrieval by 1mM EDTA in 10mM Tris buffer (pH8.5) at 120°C for 3min, [TA808486]) (1:150)