

## Product datasheet for **TA808459S**

### MAP3K8 Mouse Monoclonal Antibody [Clone ID: OTI2E3]

#### Product data:

Product Type:	Primary Antibodies
Clone Name:	OTI2E3
Applications:	IHC, WB
Recommended Dilution:	WB 1:500, IHC 1:150
Reactivity:	Human, Mouse, Rat
Host:	Mouse
Isotype:	IgG1
Clonality:	Monoclonal
Immunogen:	Human recombinant protein fragment corresponding to amino acids 277-461 of human MAP3K8(NP_005195) produced in E.coli.
Formulation:	PBS (pH 7.3) containing 1% BSA, 50% glycerol and 0.02% sodium azide.
Concentration:	1 mg/ml
Purification:	Purified from mouse ascites fluids or tissue culture supernatant by affinity chromatography (protein A/G)
Conjugation:	Unconjugated
Storage:	Store at -20°C as received.
Stability:	Stable for 12 months from date of receipt.
Predicted Protein Size:	52.7 kDa
Gene Name:	mitogen-activated protein kinase kinase kinase 8
Database Link:	<a href="#">NP_005195</a> <a href="#">Entrez Gene 26410 Mouse</a> <a href="#">Entrez Gene 116596 Rat</a> <a href="#">Entrez Gene 1326 Human</a> <a href="#">P41279</a>



[View online »](#)

**Background:**

This gene is an oncogene that encodes a member of the serine/threonine protein kinase family. The encoded protein localizes to the cytoplasm and can activate both the MAP kinase and JNK kinase pathways. This protein was shown to activate I $\kappa$ B kinases, and thus induce the nuclear production of NF- $\kappa$ B. This protein was also found to promote the production of TNF- $\alpha$  and IL-2 during T lymphocyte activation. This gene may also utilize a downstream in-frame translation start codon, and thus produce an isoform containing a shorter N-terminus. The shorter isoform has been shown to display weaker transforming activity. Alternate splicing results in multiple transcript variants that encode the same protein. [provided by RefSeq, Sep 2011]

**Synonyms:**

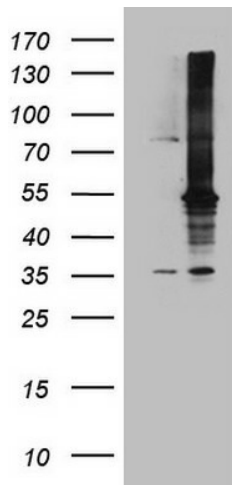
AURA2; c-COT; COT; EST; ESTF; MEKK8; Tpl-2; TPL2

**Protein Families:**

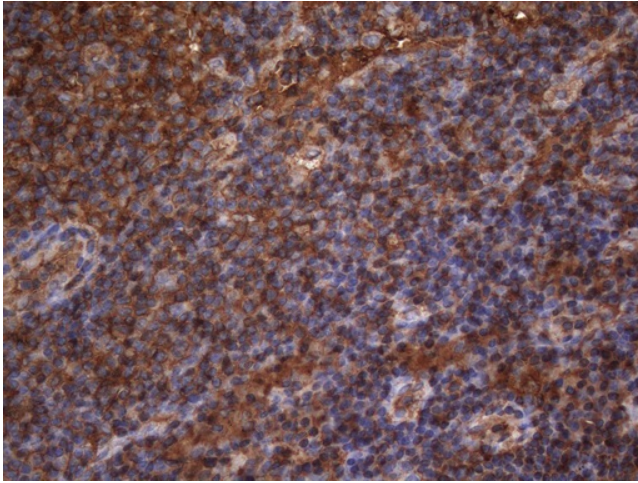
Druggable Genome, Protein Kinase

**Protein Pathways:**

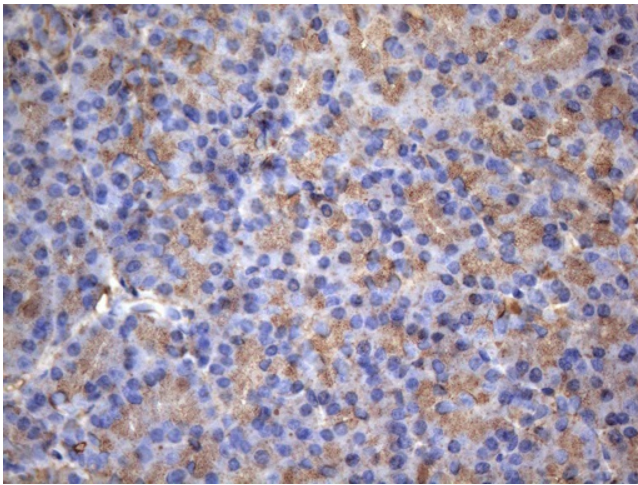
MAPK signaling pathway, T cell receptor signaling pathway, Toll-like receptor signaling pathway

**Product images:**

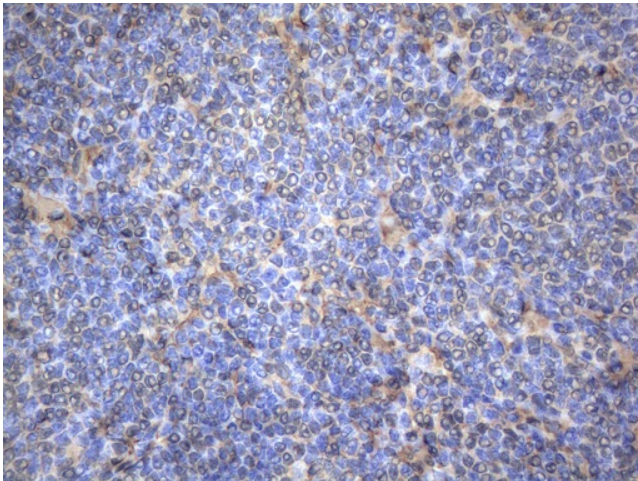
HEK293T cells were transfected with the pCMV6-ENTRY control (Left lane) or pCMV6-ENTRY MAP3K8 ([RC211171], Right lane) cDNA for 48 hrs and lysed. Equivalent amounts of cell lysates (5 ug per lane) were separated by SDS-PAGE and immunoblotted with anti-MAP3K8 (1:500). Positive lysates [LY401593] (100ug) and [LC401593] (20ug) can be purchased separately from OriGene.



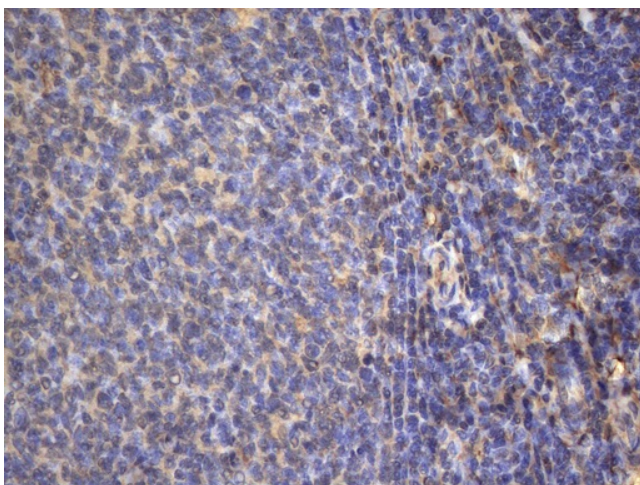
Immunohistochemical staining of paraffin-embedded Carcinoma of Human lung tissue using anti-MAP3K8 mouse monoclonal antibody. (Heat-induced epitope retrieval by 1mM EDTA in 10mM Tris buffer (pH8.5) at 120°C for 3min, [TA808459]) (1:150)



Immunohistochemical staining of paraffin-embedded Human pancreas tissue within the normal limits using anti-MAP3K8 mouse monoclonal antibody. (Heat-induced epitope retrieval by 1mM EDTA in 10mM Tris buffer (pH8.5) at 120°C for 3min, [TA808459]) (1:150)



Immunohistochemical staining of paraffin-embedded Human lymphoma tissue using anti-MAP3K8 mouse monoclonal antibody. (Heat-induced epitope retrieval by 1mM EDTA in 10mM Tris buffer (pH8.5) at 120°C for 3min, [TA808459]) (1:150)



Immunohistochemical staining of paraffin-embedded Human tonsil within the normal limits using anti-MAP3K8 mouse monoclonal antibody. (Heat-induced epitope retrieval by 1mM EDTA in 10mM Tris buffer (pH8.5) at 120°C for 3min, [TA808459]) (1:150)