

Product datasheet for **TA808455M**

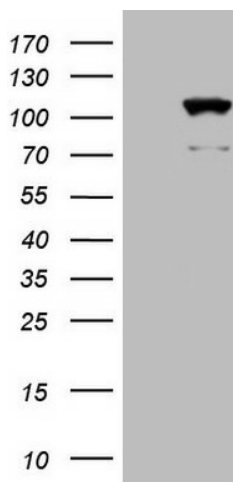
p90 Autoantigen (KIAA1524) Mouse Monoclonal Antibody [Clone ID: OTI9E6]

Product data:

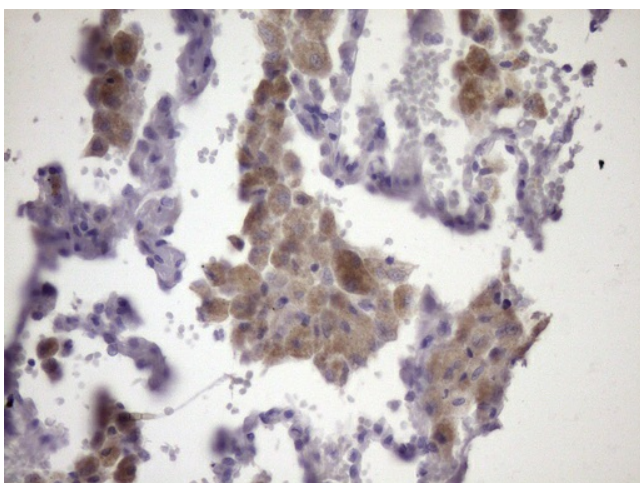
Product Type:	Primary Antibodies
Clone Name:	OTI9E6
Applications:	IHC, WB
Recommended Dilution:	WB 1:2000, IHC 1:150
Reactivity:	Human
Host:	Mouse
Isotype:	IgG1
Clonality:	Monoclonal
Immunogen:	Human recombinant protein fragment corresponding to amino acids 635-905 of human KIAA1524(NP_065941) produced in E.coli.
Formulation:	PBS (pH 7.3) containing 1% BSA, 50% glycerol and 0.02% sodium azide.
Concentration:	1 mg/ml
Purification:	Purified from mouse ascites fluids or tissue culture supernatant by affinity chromatography (protein A/G)
Conjugation:	Unconjugated
Storage:	Store at -20°C as received.
Stability:	Stable for 12 months from date of receipt.
Predicted Protein Size:	102 kDa
Gene Name:	KIAA1524
Database Link:	NP_065941 Entrez Gene 57650 Human Q8TCG1
Synonyms:	CIP2A; p90
Protein Families:	Druggable Genome

[View online »](#)

Product images:



HEK293T cells were transfected with the pCMV6-ENTRY control (Cat# [PS100001], Left lane) or pCMV6-ENTRY KIAA1524 (Cat# [RC219918], Right lane) cDNA for 48 hrs and lysed. Equivalent amounts of cell lysates (5 ug per lane) were separated by SDS-PAGE and immunoblotted with anti-KIAA1524 (Cat# [TA808455])(1:2000). Positive lysates [LY412250] (100ug) and [LC412250] (20ug) can be purchased separately from OriGene.



Immunohistochemical staining of paraffin-embedded Carcinoma of Human lung tissue using anti-KIAA1524 mouse monoclonal antibody. Heat-induced epitope retrieval by EDTA solution buffer pH 8.0 at 120°C for 3 min.