

Product datasheet for **TA808452BM**

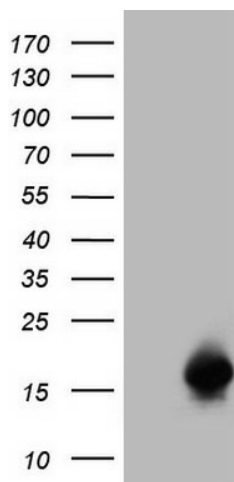
SPRR2A Mouse Monoclonal Antibody (HRP conjugated) [Clone ID: OTI4B3]

Product data:

Product Type:	Primary Antibodies
Clone Name:	OTI4B3
Applications:	WB
Recommended Dilution:	WB 1:2000
Reactivity:	Human
Host:	Mouse
Isotype:	IgG1
Clonality:	Monoclonal
Immunogen:	Full length human recombinant protein of human SPRR2A(NP_005979) produced in E.coli.
Formulation:	PBS (pH 7.3) containing 1% BSA, 50% glycerol.
Concentration:	0.5 mg/ml
Purification:	Purified from mouse ascites fluids or tissue culture supernatant by affinity chromatography (protein A/G)
Conjugation:	HRP
Storage:	Store at -20°C as received.
Stability:	Stable for 12 months from date of receipt.
Predicted Protein Size:	7.8 kDa
Gene Name:	small proline rich protein 2A
Database Link:	NP_005979 Entrez Gene 6700 Human P35326
Background:	Cross-linked envelope protein of keratinocytes. It is a keratinocyte protein that first appears in the cell cytosol, but ultimately becomes cross-linked to membrane proteins by transglutaminase. All that results in the formation of an insoluble envelope beneath the plasma membrane. [UniProtKB/Swiss-Prot Function]
Synonyms:	OTTHUMP00000016108; small proline-rich protein 2A



[View online »](#)

Product images:


HEK293T cells were transfected with the pCMV6-ENTRY control (Cat# [PS100001], Left lane) or pCMV6-ENTRY SPRR2A (Cat# [RC215197], Right lane) cDNA for 48 hrs and lysed. Equivalent amounts of cell lysates (5 ug per lane) were separated by SDS-PAGE and immunoblotted with anti-SPRR2A (Cat# [TA808452])(1:2000). Positive lysates [LY416935] (100ug) and [LC416935] (20ug) can be purchased separately from OriGene.