

## Product datasheet for **TA808450AM**

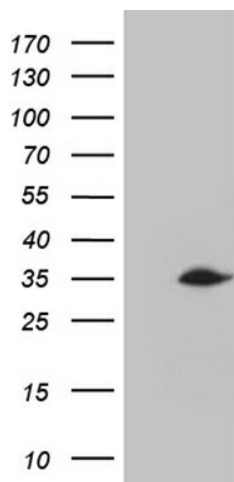
### **C2orf80 Mouse Monoclonal Antibody (Biotin conjugated) [Clone ID: OTI3B6]**

#### **Product data:**

Product Type:	Primary Antibodies
Clone Name:	OTI3B6
Applications:	WB
Recommended Dilution:	WB 1:500
Reactivity:	Human
Host:	Mouse
Isotype:	IgG1
Clonality:	Monoclonal
Immunogen:	Full length human recombinant protein of human C2orf80 (NP_001092804) produced in E.coli.
Formulation:	PBS (pH 7.3) containing 1% BSA, 50% glycerol and 0.02% sodium azide.
Concentration:	0.5 mg/ml
Purification:	Purified from mouse ascites fluids or tissue culture supernatant by affinity chromatography (protein A/G)
Conjugation:	Biotin
Storage:	Store at -20°C as received.
Stability:	Stable for 12 months from date of receipt.
Gene Name:	chromosome 2 open reading frame 80
Database Link:	<a href="#">NP_001092804</a> <a href="#">Entrez Gene 389073 Human</a> <a href="#">Q0P641</a>
Synonyms:	GONDA1



[View online »](#)

**Product images:**

HEK293T cells were transfected with the pCMV6-ENTRY control (Cat# [PS100001], Left lane) or pCMV6-ENTRY C2orf80 (Cat# [RC216172], Right lane) cDNA for 48 hrs and lysed. Equivalent amounts of cell lysates (5 ug per lane) were separated by SDS-PAGE and immunoblotted with anti-C2orf80 (1:2000) (Cat# [TA808450])(1:500). Positive lysates [LY420431] (100ug) and [LC420431] (20ug) can be purchased separately from OriGene.