

Product datasheet for **TA808445S**

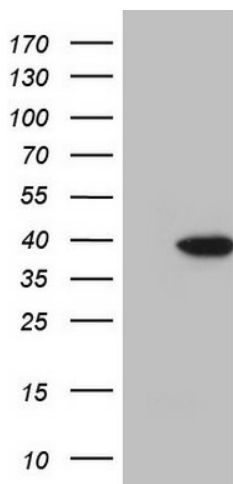
KLF9 Mouse Monoclonal Antibody [Clone ID: OTI7H8]

Product data:

Product Type:	Primary Antibodies
Clone Name:	OTI7H8
Applications:	WB
Recommended Dilution:	WB 1:2000
Reactivity:	Human, Mouse, Rat
Host:	Mouse
Isotype:	IgG2b
Clonality:	Monoclonal
Immunogen:	Full length human recombinant protein of human KLF9(NP_001197) produced in E.coli.
Formulation:	PBS (pH 7.3) containing 1% BSA, 50% glycerol and 0.02% sodium azide.
Concentration:	1 mg/ml
Purification:	Purified from mouse ascites fluids or tissue culture supernatant by affinity chromatography (protein A/G)
Conjugation:	Unconjugated
Storage:	Store at -20°C as received.
Stability:	Stable for 12 months from date of receipt.
Predicted Protein Size:	27.1 kDa
Gene Name:	Kruppel-like factor 9
Database Link:	NP_001197 Entrez Gene 16601 Mouse Entrez Gene 117560 Rat Entrez Gene 687 Human Q13886
Background:	The protein encoded by this gene is a transcription factor that binds to GC box elements located in the promoter. Binding of the encoded protein to a single GC box inhibits mRNA expression while binding to tandemly repeated GC box elements activates transcription. [provided by RefSeq, Jul 2008]
Synonyms:	BTEB; BTEB1



[View online »](#)

Product images:

HEK293T cells were transfected with the pCMV6-ENTRY control (Left lane) or pCMV6-ENTRY KLF9 ([RC210147], Right lane) cDNA for 48 hrs and lysed. Equivalent amounts of cell lysates (5 ug per lane) were separated by SDS-PAGE and immunoblotted with anti-KLF9 (1:2000). Positive lysates [LY420066] (100ug) and [LC420066] (20ug) can be purchased separately from OriGene.