

Product datasheet for **TA808436AM**

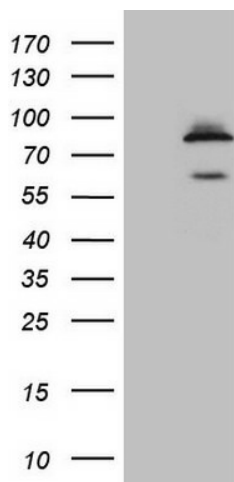
SCMH1 Mouse Monoclonal Antibody (Biotin conjugated) [Clone ID: OTI7B6]

Product data:

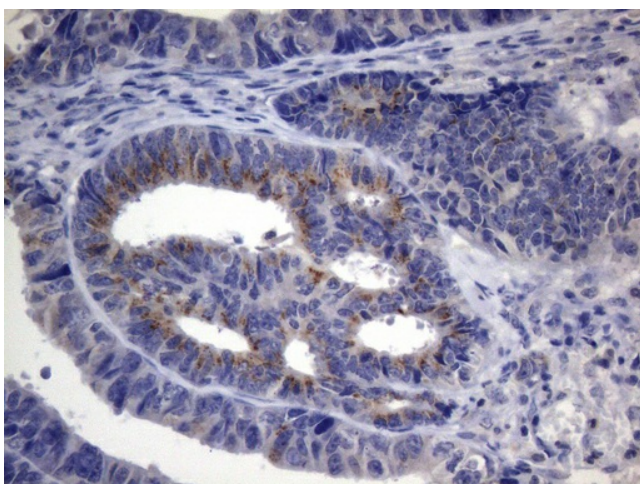
| | |
|-------------------------|---|
| Product Type: | Primary Antibodies |
| Clone Name: | OTI7B6 |
| Applications: | IHC, WB |
| Recommended Dilution: | WB 1:500, IHC 1:150 |
| Reactivity: | Human, Mouse, Rat |
| Host: | Mouse |
| Isotype: | IgG1 |
| Clonality: | Monoclonal |
| Immunogen: | Human recombinant protein fragment corresponding to amino acids 1-309 of human SCMH1(NP_036368) produced in E.coli. |
| Formulation: | PBS (pH 7.3) containing 1% BSA, 50% glycerol and 0.02% sodium azide. |
| Concentration: | 0.5 mg/ml |
| Purification: | Purified from mouse ascites fluids or tissue culture supernatant by affinity chromatography (protein A/G) |
| Conjugation: | Biotin |
| Storage: | Store at -20°C as received. |
| Stability: | Stable for 12 months from date of receipt. |
| Predicted Protein Size: | 65.9 kDa |
| Gene Name: | sex comb on midleg homolog 1 (Drosophila) |
| Database Link: | NP_036368 Entrez Gene 22955 Human Q96GD3 |
| Background: | Interacts with the SAM domain of PHC1 via its SAM domain in vitro (By similarity). Associates with a PRC1-like complex. [UniProtKB/Swiss-Prot Function] |
| Synonyms: | Scml3 |
| Protein Families: | Transcription Factors |



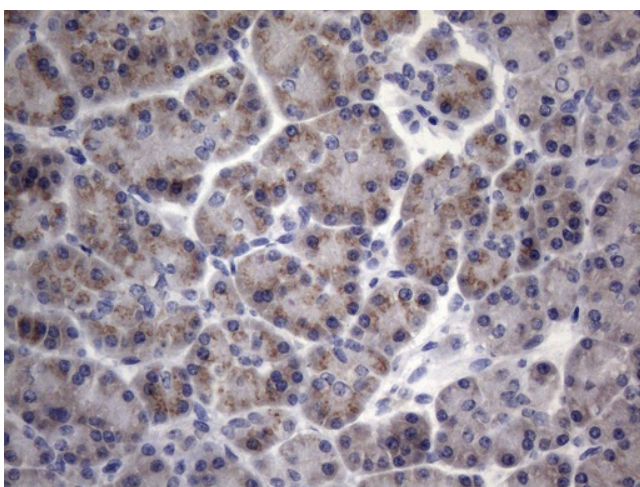
[View online »](#)

Product images:

HEK293T cells were transfected with the pCMV6-ENTRY control (Left lane) or pCMV6-ENTRY SCMH1 ([RC200193], Right lane) cDNA for 48 hrs and lysed. Equivalent amounts of cell lysates (5 ug per lane) were separated by SDS-PAGE and immunoblotted with anti-SCMH1 (1:500). Positive lysates [LY415889] (100ug) and [LC415889] (20ug) can be purchased separately from OriGene.



Immunohistochemical staining of paraffin-embedded Adenocarcinoma of Human colon tissue using anti-SCMH1 mouse monoclonal antibody. (Heat-induced epitope retrieval by 1mM EDTA in 10mM Tris buffer (pH8.5) at 120°C for 3min, [TA808436]) (1:150)



Immunohistochemical staining of paraffin-embedded Human pancreas tissue within the normal limits using anti-SCMH1 mouse monoclonal antibody. (Heat-induced epitope retrieval by 1mM EDTA in 10mM Tris buffer (pH8.5) at 120°C for 3min, [TA808436]) (1:150)