

Product datasheet for **TA808435BM**

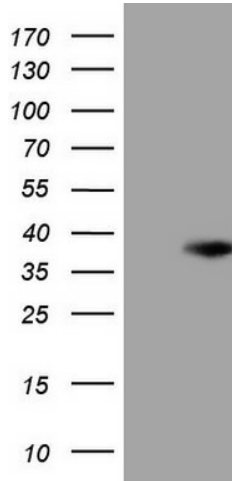
XRCC6BP1 (ATP23) Mouse Monoclonal Antibody (HRP conjugated) [Clone ID: OTI3C5]

Product data:

Product Type:	Primary Antibodies
Clone Name:	OTI3C5
Applications:	WB
Recommended Dilution:	WB 1:500
Reactivity:	Human
Host:	Mouse
Isotype:	IgG1
Clonality:	Monoclonal
Immunogen:	Full length human recombinant protein of human XRCC6BP1 (NP_150592) produced in E.coli.
Formulation:	PBS (pH 7.3) containing 1% BSA, 50% glycerol.
Concentration:	0.5 mg/ml
Purification:	Purified from mouse ascites fluids or tissue culture supernatant by affinity chromatography (protein A/G)
Conjugation:	HRP
Storage:	Store at -20°C as received.
Stability:	Stable for 12 months from date of receipt.
Predicted Protein Size:	27.9 kDa
Gene Name:	ATP23 metallopeptidase and ATP synthase assembly factor homolog (S. cerevisiae)
Database Link:	NP_150592 Entrez Gene 91419 Human Q9Y6H3
Synonyms:	KUB3; XRCC6BP1



[View online »](#)

Product images:

HEK293T cells were transfected with the pCMV6-ENTRY control (Left lane) or pCMV6-ENTRY XRCC6BP1 [RC203623], Right lane) cDNA for 48 hrs and lysed. Equivalent amounts of cell lysates (5 ug per lane) were separated by SDS-PAGE and immunoblotted with anti-XRCC6BP1 (1:500). Positive lysates [LY403240] (100ug) and [LC403240] (20ug) can be purchased separately from OriGene.