

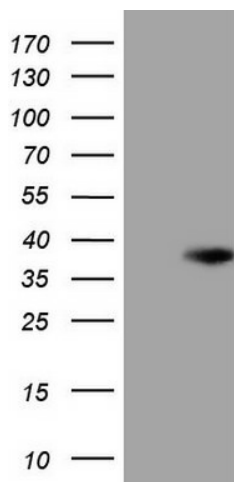
## Product datasheet for **TA808435**

### **XRCC6BP1 (ATP23) Mouse Monoclonal Antibody [Clone ID: OTI3C5]**

#### **Product data:**

Product Type:	Primary Antibodies
Clone Name:	OTI3C5
Applications:	WB
Recommended Dilution:	WB 1:500
Reactivity:	Human
Host:	Mouse
Isotype:	IgG1
Clonality:	Monoclonal
Immunogen:	Full length human recombinant protein of human XRCC6BP1 (NP_150592) produced in E.coli.
Formulation:	PBS (pH 7.3) containing 1% BSA, 50% glycerol and 0.02% sodium azide.
Concentration:	1 mg/ml
Purification:	Purified from mouse ascites fluids or tissue culture supernatant by affinity chromatography (protein A/G)
Conjugation:	Unconjugated
Storage:	Store at -20°C as received.
Stability:	Stable for 12 months from date of receipt.
Predicted Protein Size:	27.9 kDa
Gene Name:	ATP23 metalloproteinase and ATP synthase assembly factor homolog (S. cerevisiae)
Database Link:	<a href="#">NP_150592</a> <a href="#">Entrez Gene 91419 Human</a> <a href="#">Q9Y6H3</a>
Synonyms:	KUB3; XRCC6BP1

[View online »](#)

**Product images:**


HEK293T cells were transfected with the pCMV6-ENTRY control (Left lane) or pCMV6-ENTRY XRCC6BP1 [RC203623], Right lane) cDNA for 48 hrs and lysed. Equivalent amounts of cell lysates (5 ug per lane) were separated by SDS-PAGE and immunoblotted with anti-XRCC6BP1 (1:500). Positive lysates [LY403240] (100ug) and [LC403240] (20ug) can be purchased separately from OriGene.