

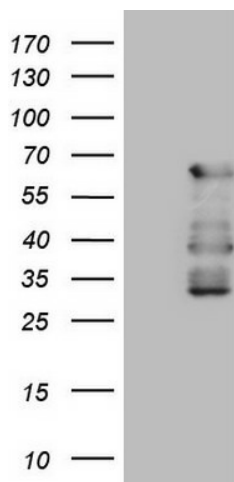
## Product datasheet for **TA808428M**

### **CAMK2B Mouse Monoclonal Antibody [Clone ID: OTI4B12]**

#### **Product data:**

Product Type:	Primary Antibodies
Clone Name:	OTI4B12
Applications:	WB
Recommended Dilution:	WB 1:2000
Reactivity:	Human, Mouse, Rat
Host:	Mouse
Isotype:	IgG1
Clonality:	Monoclonal
Immunogen:	Human recombinant protein fragment corresponding to amino acids 311-385 of human CAMK2B(NP_001211) produced in E.coli.
Formulation:	PBS (pH 7.3) containing 1% BSA, 50% glycerol and 0.02% sodium azide.
Concentration:	1 mg/ml
Purification:	Purified from mouse ascites fluids or tissue culture supernatant by affinity chromatography (protein A/G)
Conjugation:	Unconjugated
Storage:	Store at -20°C as received.
Stability:	Stable for 12 months from date of receipt.
Predicted Protein Size:	72.5 kDa
Gene Name:	calcium/calmodulin dependent protein kinase II beta
Database Link:	<a href="#">NP_001211</a> <a href="#">Entrez Gene 12323 Mouse</a> <a href="#">Entrez Gene 24245 Rat</a> <a href="#">Entrez Gene 816 Human</a> <a href="#">Q13554</a>
Synonyms:	CAM2; CAMK2; CAMKB
Protein Families:	Druggable Genome, Protein Kinase
Protein Pathways:	Calcium signaling pathway, ErbB signaling pathway, Glioma, GnRH signaling pathway, Long-term potentiation, Melanogenesis, Neurotrophin signaling pathway, Olfactory transduction, Oocyte meiosis, Wnt signaling pathway


[View online »](#)

**Product images:**


HEK293T cells were transfected with the pCMV6-ENTRY control (Left lane) or pCMV6-ENTRY CAMK2B [RC215639], Right lane) cDNA for 48 hrs and lysed. Equivalent amounts of cell lysates (5 ug per lane) were separated by SDS-PAGE and immunoblotted with anti-CAMK2B (1:2000). Positive lysates [LY420062] (100ug) and [LC420062] (20ug) can be purchased separately from OriGene.