

Product datasheet for **TA808426**

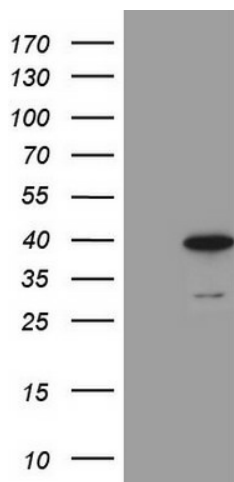
MRG15 (MORF4L1) Mouse Monoclonal Antibody [Clone ID: OTI7B5]

Product data:

Product Type:	Primary Antibodies
Clone Name:	OTI7B5
Applications:	WB
Recommended Dilution:	WB 1:2000
Reactivity:	Human, Mouse, Rat
Host:	Mouse
Isotype:	IgG2b
Clonality:	Monoclonal
Immunogen:	Human recombinant protein fragment corresponding to amino acids 6-77 of human MORF4L1(NP_006782) produced in E.coli.
Formulation:	PBS (pH 7.3) containing 1% BSA, 50% glycerol and 0.02% sodium azide.
Concentration:	1 mg/ml
Purification:	Purified from mouse ascites fluids or tissue culture supernatant by affinity chromatography (protein A/G)
Conjugation:	Unconjugated
Storage:	Store at -20°C as received.
Stability:	Stable for 12 months from date of receipt.
Predicted Protein Size:	37.1 kDa
Gene Name:	mortality factor 4 like 1
Database Link:	NP_006782 Entrez Gene 21761 Mouse Entrez Gene 300891 Rat Entrez Gene 10933 Human Q9UBU8
Synonyms:	Eaf3; FWP006; HsT17725; MEAF3; MORFRG15; MRG15; S863-6
Protein Families:	Transcription Factors



[View online »](#)

Product images:

HEK293T cells were transfected with the pCMV6-ENTRY control (Left lane) or pCMV6-ENTRY MORF4L1 ([RC200251], Right lane) cDNA for 48 hrs and lysed. Equivalent amounts of cell lysates (5 ug per lane) were separated by SDS-PAGE and immunoblotted with anti-MORF4L1 (1:2000). Positive lysates [LY402027] (100ug) and [LC402027] (20ug) can be purchased separately from OriGene.