

Product datasheet for **TA808418BM**

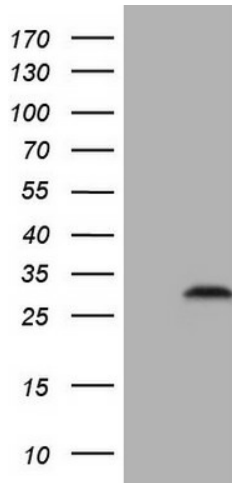
C3orf43 (SMCO1) Mouse Monoclonal Antibody (HRP conjugated) [Clone ID: OTI1H6]

Product data:

| | |
|-------------------------|---|
| Product Type: | Primary Antibodies |
| Clone Name: | OTI1H6 |
| Applications: | WB |
| Recommended Dilution: | WB 1:2000 |
| Reactivity: | Human |
| Host: | Mouse |
| Isotype: | IgG1 |
| Clonality: | Monoclonal |
| Immunogen: | Full length human recombinant protein of human C3orf43 (NP_001071125) produced in E.coli. |
| Formulation: | PBS (pH 7.3) containing 1% BSA, 50% glycerol. |
| Concentration: | 0.5 mg/ml |
| Purification: | Purified from mouse ascites fluids or tissue culture supernatant by affinity chromatography (protein A/G) |
| Conjugation: | HRP |
| Storage: | Store at -20°C as received. |
| Stability: | Stable for 12 months from date of receipt. |
| Predicted Protein Size: | 24.4 kDa |
| Gene Name: | single-pass membrane protein with coiled-coil domains 1 |
| Database Link: | NP_001071125 Entrez Gene 255798 Human Q147U7 |
| Synonyms: | C3orf43 |

[View online »](#)

Product images:



HEK293T cells were transfected with the pCMV6-ENTRY control (Cat# [PS100001], Left lane) or pCMV6-ENTRY C3orf43 (Cat# [RC223719], Right lane) cDNA for 48 hrs and lysed. Equivalent amounts of cell lysates (5 ug per lane) were separated by SDS-PAGE and immunoblotted with anti-C3orf43 (Cat# [TA808418])(1:2000). Positive lysates [LY421471] (100ug) and [LC421471] (20ug) can be purchased separately from OriGene.