

## Product datasheet for **TA808417S**

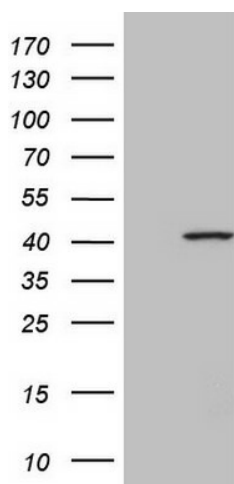
### SPATA22 Mouse Monoclonal Antibody [Clone ID: OTI2B1]

#### Product data:

Product Type:	Primary Antibodies
Clone Name:	OTI2B1
Applications:	WB
Recommended Dilution:	WB 1:500
Reactivity:	Human
Host:	Mouse
Isotype:	IgG2b
Clonality:	Monoclonal
Immunogen:	Full length human recombinant protein of human SPATA22 (NP_115987) produced in E.coli.
Formulation:	PBS (pH 7.3) containing 1% BSA, 50% glycerol and 0.02% sodium azide.
Concentration:	1 mg/ml
Purification:	Purified from mouse ascites fluids or tissue culture supernatant by affinity chromatography (protein A/G)
Conjugation:	Unconjugated
Storage:	Store at -20°C as received.
Stability:	Stable for 12 months from date of receipt.
Predicted Protein Size:	41.1 kDa
Gene Name:	spermatogenesis associated 22
Database Link:	<a href="#">NP_115987</a> <a href="#">Entrez Gene 84690 Human</a> <a href="#">Q8NHS9</a>
Synonyms:	NYD-SP20; NYDSP20



[View online »](#)

**Product images:**

HEK293T cells were transfected with the pCMV6-ENTRY control (Left lane) or pCMV6-ENTRY SPATA22 [RC205958], Right lane) cDNA for 48 hrs and lysed. Equivalent amounts of cell lysates (5 ug per lane) were separated by SDS-PAGE and immunoblotted with anti-SPATA22 (1:500). Positive lysates [LY410013] (100ug) and [LC410013] (20ug) can be purchased separately from OriGene.