

Product datasheet for **TA808411AM**

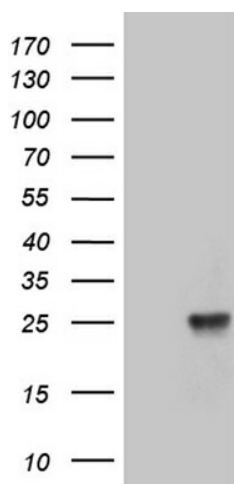
TEX30 Mouse Monoclonal Antibody (Biotin conjugated) [Clone ID: OTI7C3]

Product data:

Product Type:	Primary Antibodies
Clone Name:	OTI7C3
Applications:	WB
Recommended Dilution:	WB 1:500
Reactivity:	Human, Mouse, Rat
Host:	Mouse
Isotype:	IgG2a
Clonality:	Monoclonal
Immunogen:	Full length human recombinant protein of human TEX30(NP_620134) produced in E.coli.
Formulation:	PBS (pH 7.3) containing 1% BSA, 50% glycerol and 0.02% sodium azide.
Concentration:	0.5 mg/ml
Purification:	Purified from mouse ascites fluids or tissue culture supernatant by affinity chromatography (protein A/G)
Conjugation:	Biotin
Storage:	Store at -20°C as received.
Stability:	Stable for 12 months from date of receipt.
Predicted Protein Size:	21 kDa
Gene Name:	testis expressed 30
Database Link:	NP_620134 Entrez Gene 93081 Human Q5JUR7
Synonyms:	C13orf27



[View online »](#)

Product images:

HEK293T cells were transfected with the pCMV6-ENTRY control (Cat# [PS100001], Left lane) or pCMV6-ENTRY TEX30 (Cat# [RC205419], Right lane) cDNA for 48 hrs and lysed. Equivalent amounts of cell lysates (5 ug per lane) were separated by SDS-PAGE and immunoblotted with anti-TEX30 (Cat# [TA808411])(1:500). Positive lysates [LY408518] (100ug) and [LC408518] (20ug) can be purchased separately from OriGene.