

Product datasheet for **TA808410M**

SCFD1 Mouse Monoclonal Antibody [Clone ID: OTI10D8]

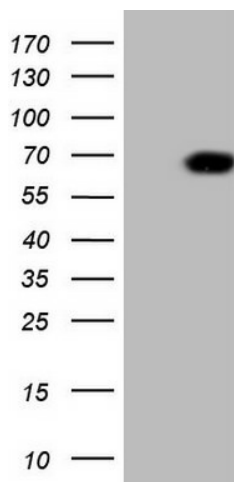
Product data:

Product Type:	Primary Antibodies
Clone Name:	OTI10D8
Applications:	IHC, WB
Recommended Dilution:	WB 1:2000, IHC 1:150
Reactivity:	Human, Mouse, Rat
Host:	Mouse
Isotype:	IgG1
Clonality:	Monoclonal
Immunogen:	Human recombinant protein fragment corresponding to amino acids 66-190 of human SCFD1(NP_878255) produced in E.coli.
Formulation:	PBS (pH 7.3) containing 1% BSA, 50% glycerol and 0.02% sodium azide.
Concentration:	1 mg/ml
Purification:	Purified from mouse ascites fluids or tissue culture supernatant by affinity chromatography (protein A/G)
Conjugation:	Unconjugated
Storage:	Store at -20°C as received.
Stability:	Stable for 12 months from date of receipt.
Gene Name:	sec1 family domain containing 1
Database Link:	NP_878255 Entrez Gene 54350 Rat Entrez Gene 76983 Mouse Entrez Gene 23256 Human Q8WVM8
Synonyms:	C14orf163; RA410; SLY1; SLY1P; STXBP1L2

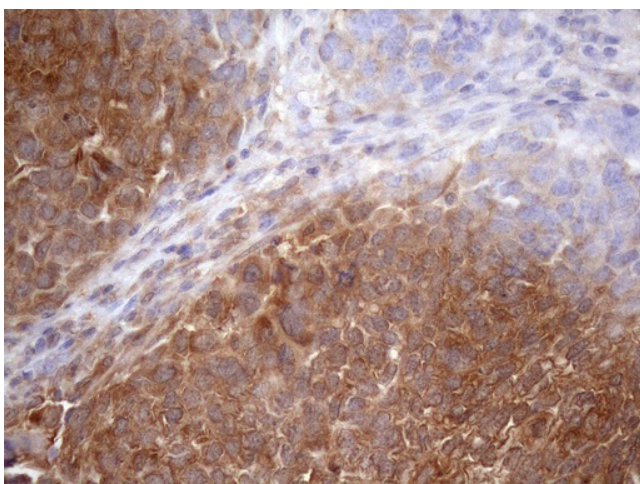


[View online »](#)

Product images:



HEK293T cells were transfected with the pCMV6-ENTRY control (Left lane) or pCMV6-ENTRY SCFD1 ([RC217990], Right lane) cDNA for 48 hrs and lysed. Equivalent amounts of cell lysates (5 ug per lane) were separated by SDS-PAGE and immunoblotted with anti-SCFD1 (1:2000).



Immunohistochemical staining of paraffin-embedded Adenocarcinoma of Human ovary tissue using anti-SCFD1 mouse monoclonal antibody. Heat-induced epitope retrieval by EDTA solution buffer pH 8.0 at 120°C for 3 min.