

## Product datasheet for **TA808403AM**

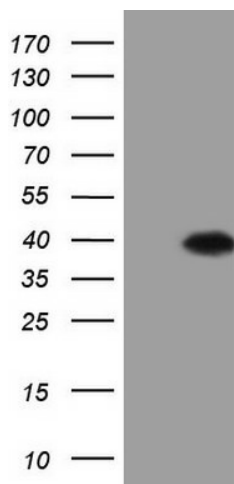
### ASB8 Mouse Monoclonal Antibody (Biotin conjugated) [Clone ID: OTI7D2]

#### Product data:

|                         |  |
|-------------------------|--|
| Product Type:           | Primary Antibodies   |
| Clone Name:             | OTI7D2   |
| Applications:           | WB   |
| Recommended Dilution:   | WB 1:2000  |
| Reactivity:             | Human, Mouse, Rat  |
| Host:                   | Mouse  |
| Isotype:                | IgG2b  |
| Clonality:              | Monoclonal   |
| Immunogen:              | Full length human recombinant protein of human ASB8 (NP_077000) produced in E.coli.  |
| Formulation:            | PBS (pH 7.3) containing 1% BSA, 50% glycerol and 0.02% sodium azide.   |
| Concentration:          | 0.5 mg/ml  |
| Purification:           | Purified from mouse ascites fluids or tissue culture supernatant by affinity chromatography (protein A/G)  |
| Conjugation:            | Biotin   |
| Storage:                | Store at -20°C as received.  |
| Stability:              | Stable for 12 months from date of receipt.   |
| Predicted Protein Size: | 31.5 kDa   |
| Gene Name:              | ankyrin repeat and SOCS box containing 8   |
| Database Link:          | <a href="#">NP_077000</a><br><a href="#">Entrez Gene 78541 Mouse</a> <a href="#">Entrez Gene 315287 Rat</a> <a href="#">Entrez Gene 140461 Human</a><br><a href="#">Q9H765</a> |
| Synonyms:               | PP14212  |
| Protein Families:       | Druggable Genome   |



[View online »](#)

**Product images:**

HEK293T cells were transfected with the pCMV6-ENTRY control (Left lane) or pCMV6-ENTRY ASB8 ([RC201716], Right lane) cDNA for 48 hrs and lysed. Equivalent amounts of cell lysates (5 ug per lane) were separated by SDS-PAGE and immunoblotted with anti-ASB8 (1:2000). Positive lysates [LY411366] (100ug) and [LC411366] (20ug) can be purchased separately from OriGene.