

Product datasheet for **TA808401**

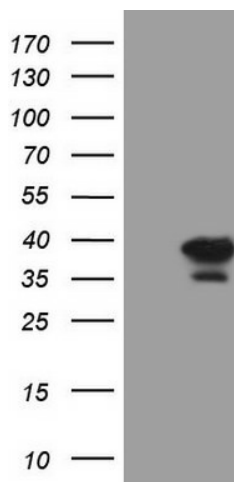
ASB8 Mouse Monoclonal Antibody [Clone ID: OTI3A12]

Product data:

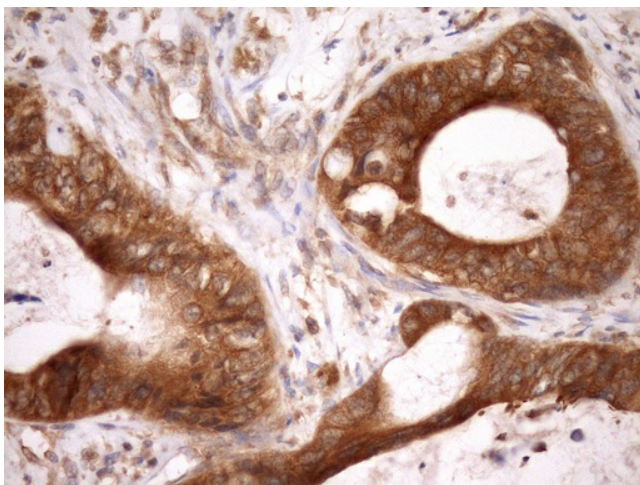
Product Type:	Primary Antibodies
Clone Name:	OTI3A12
Applications:	IHC, WB
Recommended Dilution:	WB 1:2000, IHC 1:150
Reactivity:	Human, Mouse, Rat
Host:	Mouse
Isotype:	IgG2a
Clonality:	Monoclonal
Immunogen:	Full length human recombinant protein of human ASB8 (NP_077000) produced in E.coli.
Formulation:	PBS (pH 7.3) containing 1% BSA, 50% glycerol and 0.02% sodium azide.
Concentration:	1 mg/ml
Purification:	Purified from mouse ascites fluids or tissue culture supernatant by affinity chromatography (protein A/G)
Conjugation:	Unconjugated
Storage:	Store at -20°C as received.
Stability:	Stable for 12 months from date of receipt.
Predicted Protein Size:	31.5 kDa
Gene Name:	ankyrin repeat and SOCS box containing 8
Database Link:	NP_077000 Entrez Gene 78541 Mouse Entrez Gene 315287 Rat Entrez Gene 140461 Human Q9H765
Synonyms:	PP14212
Protein Families:	Druggable Genome



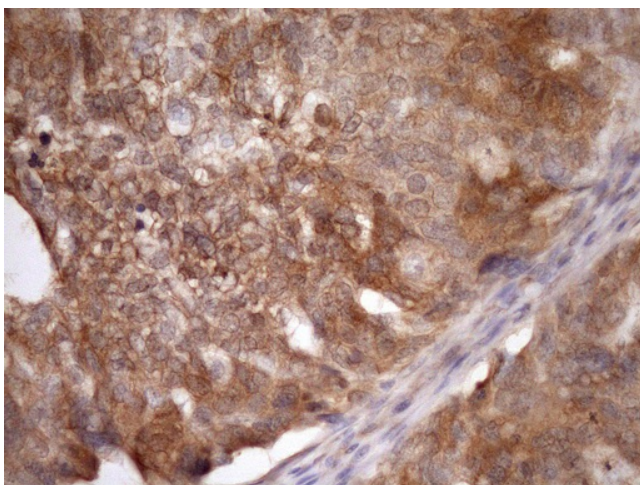
[View online »](#)

Product images:

HEK293T cells were transfected with the pCMV6-ENTRY control (Cat# [PS100001], Left lane) or pCMV6-ENTRY ASB8 (Cat# [RC201716], Right lane) cDNA for 48 hrs and lysed. Equivalent amounts of cell lysates (5 ug per lane) were separated by SDS-PAGE and immunoblotted with anti-ASB8 (Cat# TA808401)(1:2000). Positive lysates [LY411366] (100ug) and [LC411366] (20ug) can be purchased separately from OriGene.



Immunohistochemical staining of paraffin-embedded Adenocarcinoma of Human colon tissue using anti-ASB8 mouse monoclonal antibody. (Heat-induced epitope retrieval by Tris-EDTA, pH8.0, TA808401) (1:150)



Immunohistochemical staining of paraffin-embedded Carcinoma of Human liver tissue using anti-ASB8 mouse monoclonal antibody. (Heat-induced epitope retrieval by Tris-EDTA, pH8.0, TA808401) (1:150)