

## Product datasheet for **TA808398S**

### Cytokeratin 16 (KRT16) Mouse Monoclonal Antibody [Clone ID: OTI1G5]

#### Product data:

Product Type:	Primary Antibodies
Clone Name:	OTI1G5
Applications:	IHC, WB
Recommended Dilution:	WB 1:2000, IHC 1:150
Reactivity:	Human, Rat
Host:	Mouse
Isotype:	IgG2a
Clonality:	Monoclonal
Immunogen:	Full length human recombinant protein of human KRT16 (NP_005548) produced in E.coli.
Formulation:	PBS (pH 7.3) containing 1% BSA, 50% glycerol and 0.02% sodium azide.
Concentration:	1 mg/ml
Purification:	Purified from mouse ascites fluids or tissue culture supernatant by affinity chromatography (protein A/G)
Conjugation:	Unconjugated
Storage:	Store at -20°C as received.
Stability:	Stable for 12 months from date of receipt.
Predicted Protein Size:	51.1 kDa
Gene Name:	keratin 16
Database Link:	<a href="#">NP_005548</a> <a href="#">Entrez Gene 303530 Rat</a> <a href="#">Entrez Gene 3868 Human</a> <a href="#">P08779</a>



[View online »](#)

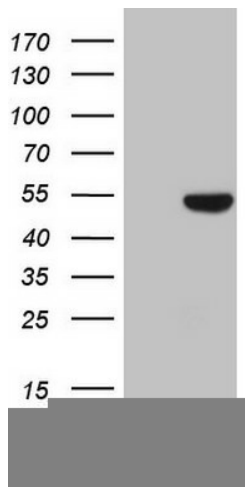
**Background:**

The protein encoded by this gene is a member of the keratin gene family. The keratins are intermediate filament proteins responsible for the structural integrity of epithelial cells and are subdivided into cytokeratins and hair keratins. Most of the type I cytokeratins consist of acidic proteins which are arranged in pairs of heterotypic keratin chains and are clustered in a region of chromosome 17q12-q21. This keratin has been coexpressed with keratin 14 in a number of epithelial tissues, including esophagus, tongue, and hair follicles. Mutations in this gene are associated with type 1 pachyonychia congenita, non-epidermolytic palmoplantar keratoderma and unilateral palmoplantar verrucous nevus. [provided by RefSeq, Jul 2008]

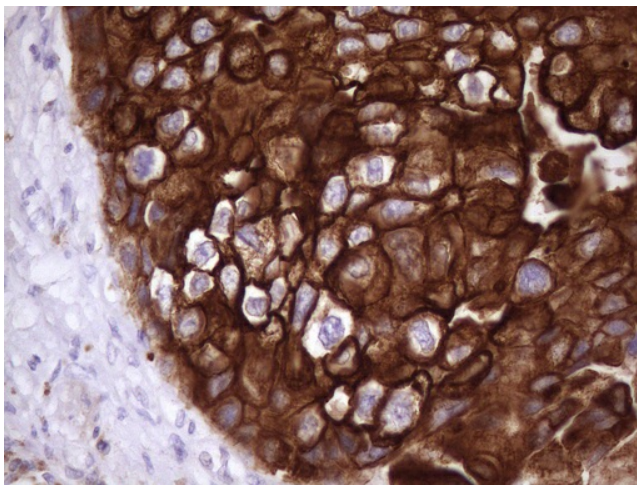
**Synonyms:**

CK16; FNEPPK; K1CP; K16; KRT16A; NEPPK; PC1

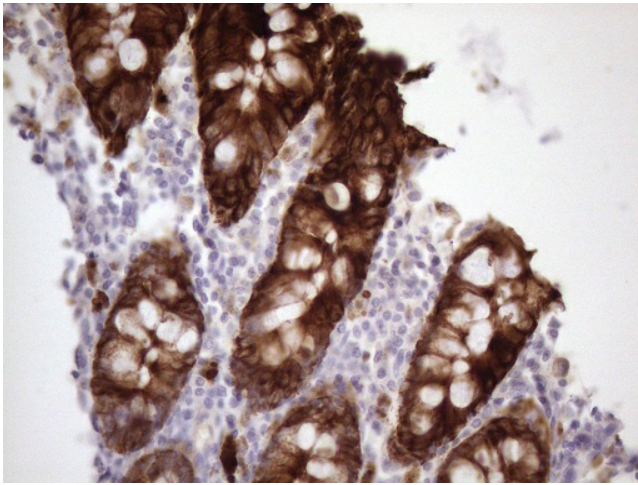
**Product images:**



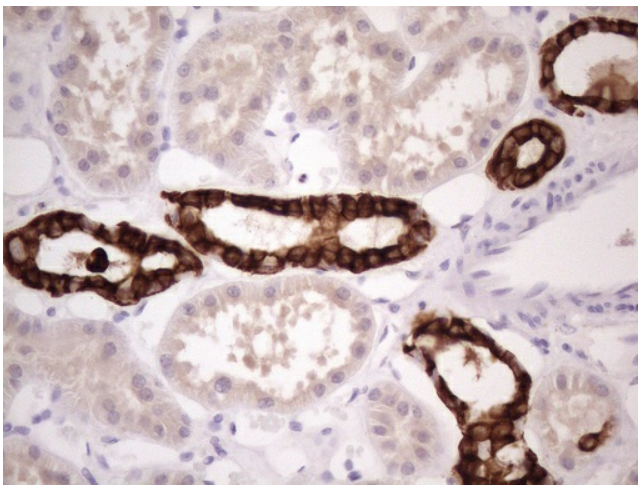
HEK293T cells were transfected with the pCMV6-ENTRY control (Left lane) or pCMV6-ENTRY KRT16 ([RC204470], Right lane) cDNA for 48 hrs and lysed. Equivalent amounts of cell lysates (5 ug per lane) were separated by SDS-PAGE and immunoblotted with anti-KRT16 (1:2000). Positive lysates [LY417219] (100ug) and [LC417219] (20ug) can be purchased separately from OriGene.



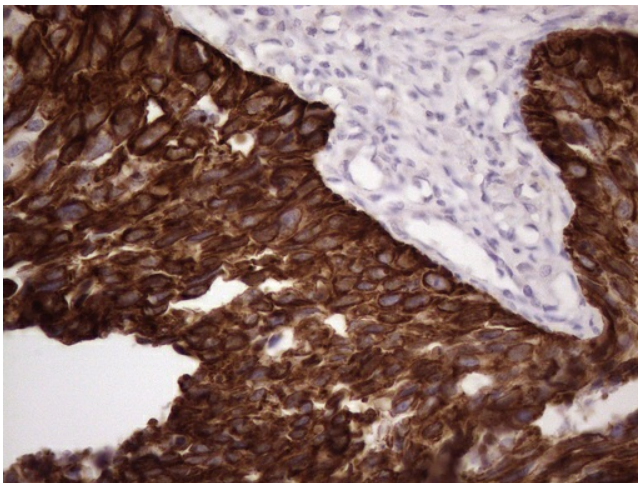
Immunohistochemical staining of paraffin-embedded Adenocarcinoma of Human breast tissue using anti-KRT16 mouse monoclonal antibody. (Heat-induced epitope retrieval by 1mM EDTA in 10mM Tris, pH8.5, 120°C for 3min, [TA808398]) (1:150)



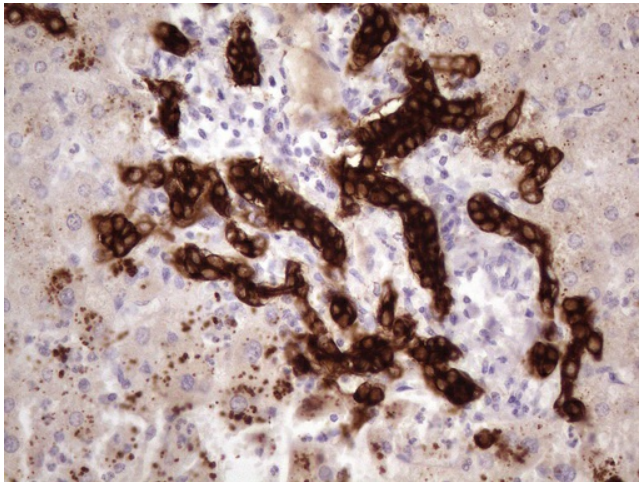
Immunohistochemical staining of paraffin-embedded Human colon tissue within the normal limits using anti-KRT16 mouse monoclonal antibody. (Heat-induced epitope retrieval by 1mM EDTA in 10mM Tris, pH8.5, 120°C for 3min, [TA808398]) (1:150)



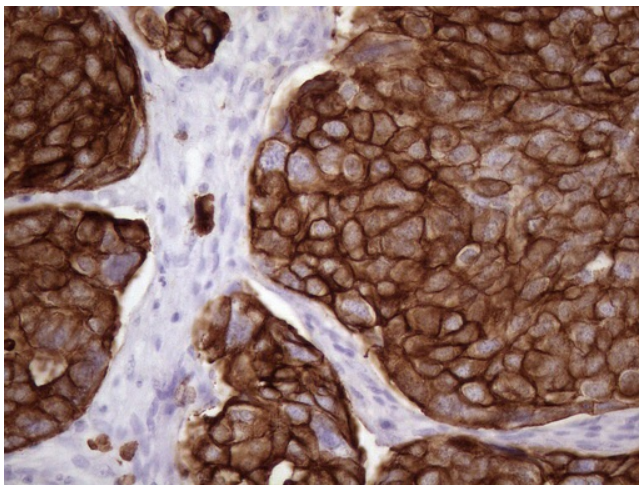
Immunohistochemical staining of paraffin-embedded Human Kidney tissue within the normal limits using anti-KRT16 mouse monoclonal antibody. (Heat-induced epitope retrieval by 1mM EDTA in 10mM Tris, pH8.5, 120°C for 3min, [TA808398]) (1:150)



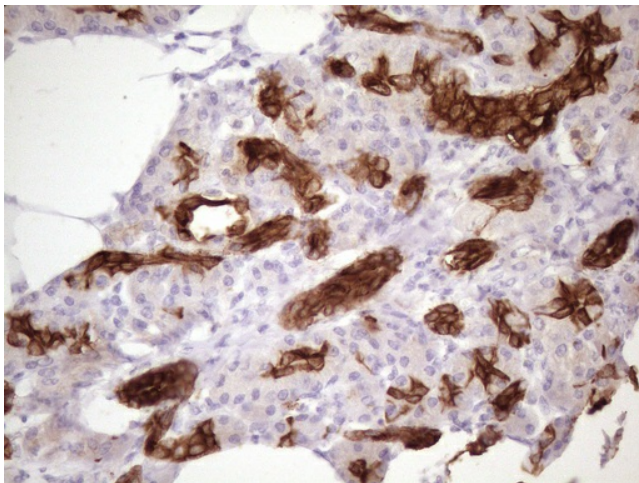
Immunohistochemical staining of paraffin-embedded Carcinoma of Human kidney tissue using anti-KRT16 mouse monoclonal antibody. (Heat-induced epitope retrieval by 1mM EDTA in 10mM Tris, pH8.5, 120°C for 3min, [TA808398]) (1:150)



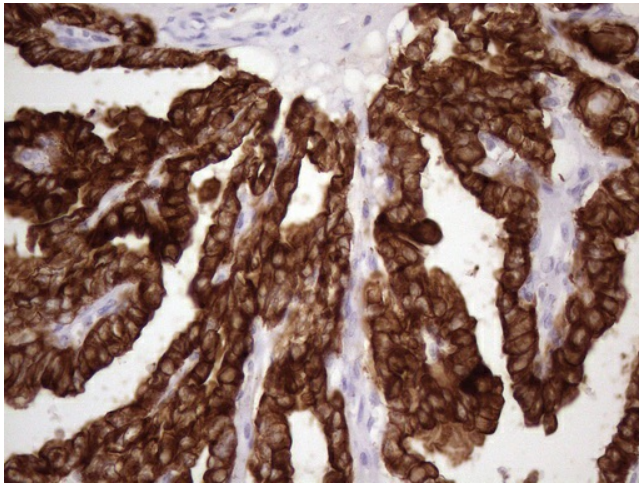
Immunohistochemical staining of paraffin-embedded Human liver tissue within the normal limits using anti-KRT16 mouse monoclonal antibody. (Heat-induced epitope retrieval by 1mM EDTA in 10mM Tris, pH8.5, 120°C for 3min, [TA808398]) (1:150)



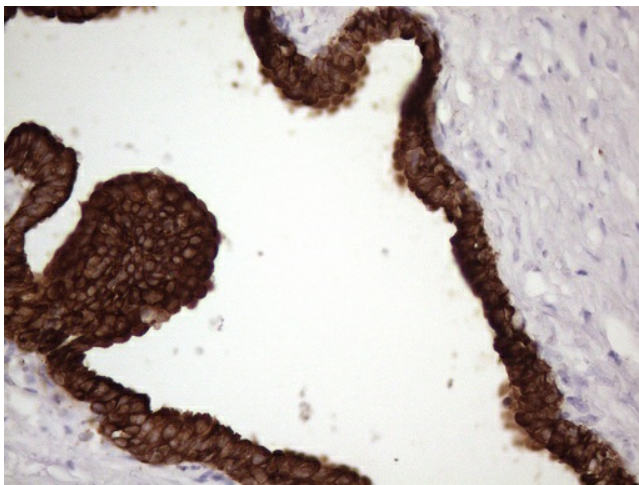
Immunohistochemical staining of paraffin-embedded Adenocarcinoma of Human ovary tissue using anti-KRT16 mouse monoclonal antibody. (Heat-induced epitope retrieval by 1mM EDTA in 10mM Tris, pH8.5, 120°C for 3min, [TA808398]) (1:150)



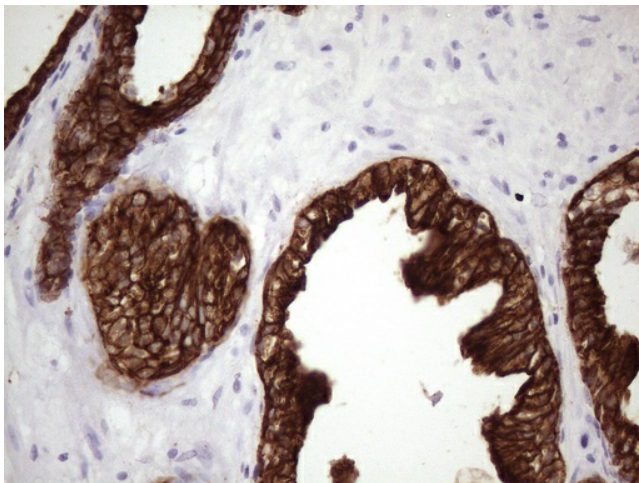
Immunohistochemical staining of paraffin-embedded Human pancreas tissue within the normal limits using anti-KRT16 mouse monoclonal antibody. (Heat-induced epitope retrieval by 1mM EDTA in 10mM Tris, pH8.5, 120°C for 3min, [TA808398]) (1:150)



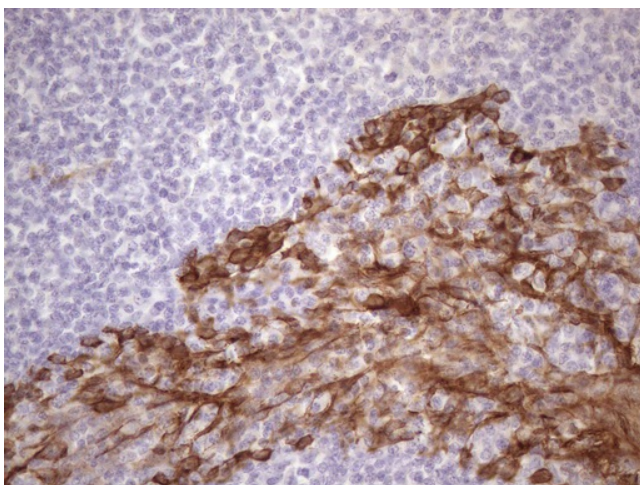
Immunohistochemical staining of paraffin-embedded Carcinoma of Human thyroid tissue using anti-KRT16 mouse monoclonal antibody. (Heat-induced epitope retrieval by 1mM EDTA in 10mM Tris, pH8.5, 120°C for 3min, [TA808398]) (1:150)



Immunohistochemical staining of paraffin-embedded Human prostate tissue within the normal limits using anti-KRT16 mouse monoclonal antibody. (Heat-induced epitope retrieval by 1mM EDTA in 10mM Tris, pH8.5, 120°C for 3min, [TA808398]) (1:150)



Immunohistochemical staining of paraffin-embedded Carcinoma of Human prostate tissue using anti-KRT16 mouse monoclonal antibody. (Heat-induced epitope retrieval by 1mM EDTA in 10mM Tris, pH8.5, 120°C for 3min, [TA808398]) (1:150)



Immunohistochemical staining of paraffin-embedded Human tonsil within the normal limits using anti-KRT16 mouse monoclonal antibody. (Heat-induced epitope retrieval by 1mM EDTA in 10mM Tris, pH8.5, 120°C for 3min, [TA808398]) (1:150)