

Product datasheet for **TA808396M**

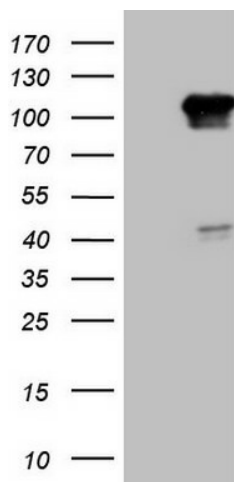
RGL2 Mouse Monoclonal Antibody [Clone ID: OTI4C1]

Product data:

Product Type:	Primary Antibodies
Clone Name:	OTI4C1
Applications:	WB
Recommended Dilution:	WB 1:2000
Reactivity:	Human, Mouse, Rat
Host:	Mouse
Isotype:	IgG1
Clonality:	Monoclonal
Immunogen:	Human recombinant protein fragment corresponding to amino acids 547-777 of human RGL2(NP_004752) produced in E.coli.
Formulation:	PBS (pH 7.3) containing 1% BSA, 50% glycerol and 0.02% sodium azide.
Concentration:	1 mg/ml
Purification:	Purified from mouse ascites fluids or tissue culture supernatant by affinity chromatography (protein A/G)
Conjugation:	Unconjugated
Storage:	Store at -20°C as received.
Stability:	Stable for 12 months from date of receipt.
Predicted Protein Size:	83.4 kDa
Gene Name:	ral guanine nucleotide dissociation stimulator like 2
Database Link:	NP_004752 Entrez Gene 5863 Human O15211
Synonyms:	HKE1.5; KE1.5; RAB2L
Protein Families:	Druggable Genome

[View online »](#)

Product images:



HEK293T cells were transfected with the pCMV6-ENTRY control (Left lane) or pCMV6-ENTRY RGL2 ([RC207582], Right lane) cDNA for 48 hrs and lysed. Equivalent amounts of cell lysates (5 ug per lane) were separated by SDS-PAGE and immunoblotted with anti-RGL2 (1:2000). Positive lysates [LY417774] (100ug) and [LC417774] (20ug) can be purchased separately from OriGene.