

Product datasheet for **TA808395**

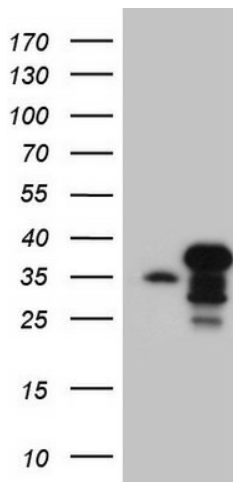
SPT3 (SUPT3H) Mouse Monoclonal Antibody [Clone ID: OTI1A5]

Product data:

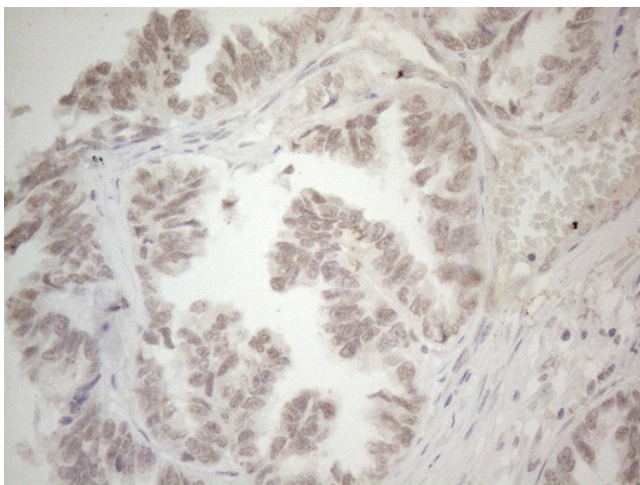
Product Type:	Primary Antibodies
Clone Name:	OTI1A5
Applications:	IHC, WB
Recommended Dilution:	WB 1:2000, IHC 1:150
Reactivity:	Human, Mouse, Rat
Host:	Mouse
Isotype:	IgG1
Clonality:	Monoclonal
Immunogen:	Full length human recombinant protein of human SUPT3H (NP_852001) produced in E.coli.
Formulation:	PBS (pH 7.3) containing 1% BSA, 50% glycerol and 0.02% sodium azide.
Concentration:	1 mg/ml
Purification:	Purified from mouse ascites fluids or tissue culture supernatant by affinity chromatography (protein A/G)
Conjugation:	Unconjugated
Storage:	Store at -20°C as received.
Stability:	Stable for 12 months from date of receipt.
Predicted Protein Size:	37.2 kDa
Gene Name:	SPT3 homolog, SAGA and STAGA complex component
Database Link:	NP_852001 Entrez Gene 8464 Human O75486
Synonyms:	SPT3; SPT3L
Protein Families:	Stem cell - Pluripotency, Transcription Factors



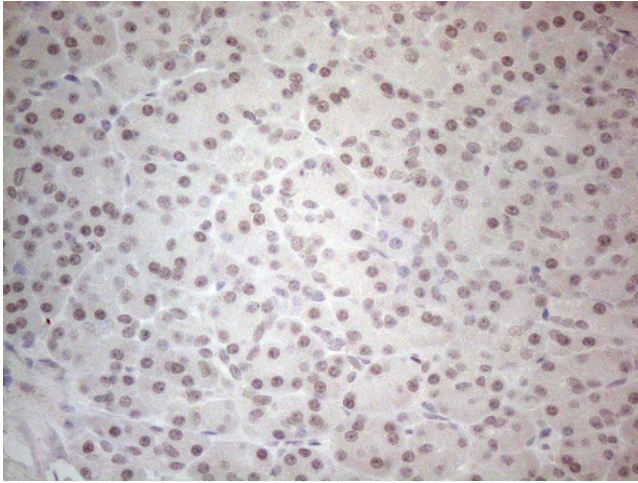
[View online »](#)

Product images:

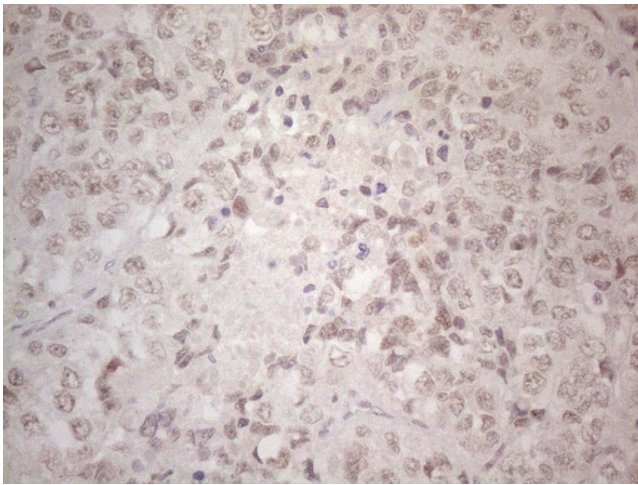
HEK293T cells were transfected with the pCMV6-ENTRY control (Cat# [PS100001], Left lane) or pCMV6-ENTRY SUPT3H (Cat# [RC208269], Right lane) cDNA for 48 hrs and lysed. Equivalent amounts of cell lysates (5 ug per lane) were separated by SDS-PAGE and immunoblotted with anti-SUPT3H (Cat# TA808395)(1:2000). Positive lysates [LY405748] (100ug) and [LC405748] (20ug) can be purchased separately from OriGene.



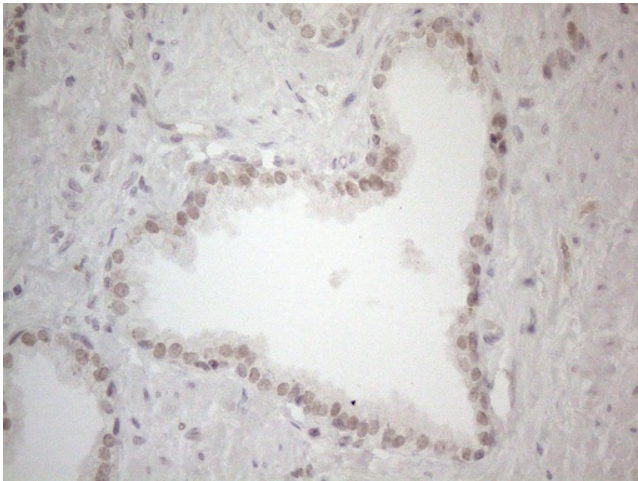
Immunohistochemical staining of paraffin-embedded Adenocarcinoma of Human ovary tissue using anti-SUPT3H mouse monoclonal antibody. (Heat-induced epitope retrieval by 1mM EDTA in 10mM Tris buffer (pH8.5) at 120°C for 3min, TA808395) (1:150)



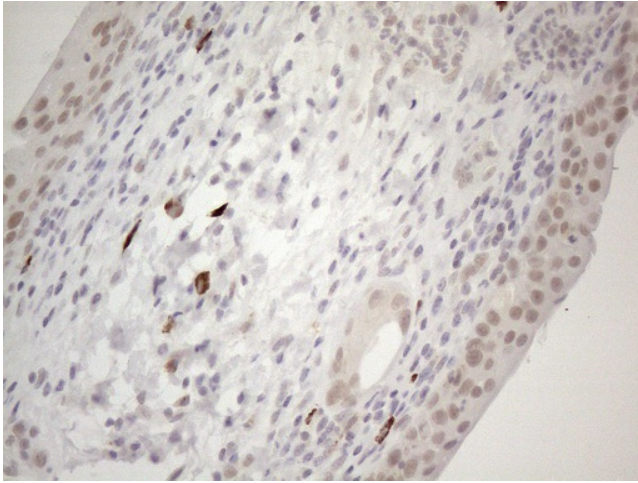
Immunohistochemical staining of paraffin-embedded Human pancreas tissue within the normal limits using anti-SUPT3H mouse monoclonal antibody. (Heat-induced epitope retrieval by 1mM EDTA in 10mM Tris buffer (pH8.5) at 120°C for 3min, TA808395) (1:150)



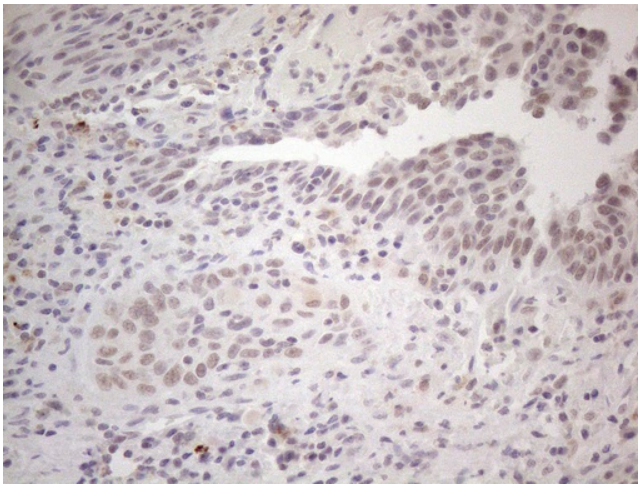
Immunohistochemical staining of paraffin-embedded Adenocarcinoma of Human endometrium tissue using anti-SUPT3H mouse monoclonal antibody. (Heat-induced epitope retrieval by 1mM EDTA in 10mM Tris buffer (pH8.5) at 120°C for 3min, TA808395) (1:150)



Immunohistochemical staining of paraffin-embedded Carcinoma of Human prostate tissue using anti-SUPT3H mouse monoclonal antibody. (Heat-induced epitope retrieval by 1mM EDTA in 10mM Tris buffer (pH8.5) at 120°C for 3min, TA808395) (1:150)



Immunohistochemical staining of paraffin-embedded Human bladder tissue within the normal limits using anti-SUPT3H mouse monoclonal antibody. (Heat-induced epitope retrieval by 1mM EDTA in 10mM Tris buffer (pH8.5) at 120°C for 3min, TA808395) (1:150)



Immunohistochemical staining of paraffin-embedded Carcinoma of Human bladder tissue using anti-SUPT3H mouse monoclonal antibody. (Heat-induced epitope retrieval by 1mM EDTA in 10mM Tris buffer (pH8.5) at 120°C for 3min, TA808395) (1:150)