

Product datasheet for **TA808345BM**

CAMK2B Mouse Monoclonal Antibody (HRP conjugated) [Clone ID: OTI8D9]

Product data:

Product Type:	Primary Antibodies
Clone Name:	OTI8D9
Applications:	IHC, WB
Recommended Dilution:	WB 1:2000, IHC 1:150
Reactivity:	Human, Mouse, Rat
Host:	Mouse
Isotype:	IgG1
Clonality:	Monoclonal
Immunogen:	Human recombinant protein fragment corresponding to amino acids 311-385 of human CAMK2B(NP_001211) produced in E.coli.
Formulation:	PBS (pH 7.3) containing 1% BSA, 50% glycerol.
Concentration:	0.5 mg/ml
Purification:	Purified from mouse ascites fluids or tissue culture supernatant by affinity chromatography (protein A/G)
Conjugation:	HRP
Storage:	Store at -20°C as received.
Stability:	Stable for 12 months from date of receipt.
Predicted Protein Size:	60.39 kDa
Gene Name:	calcium/calmodulin dependent protein kinase II beta
Database Link:	NP_001211 Entrez Gene 12323 Mouse Entrez Gene 24245 Rat Entrez Gene 816 Human Q13554



[View online »](#)

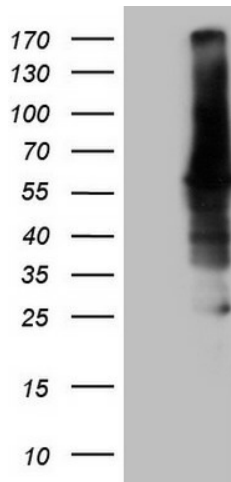
Background: The product of this gene belongs to the serine/threonine protein kinase family and to the Ca(2+)/calmodulin-dependent protein kinase subfamily. Calcium signaling is crucial for several aspects of plasticity at glutamatergic synapses. In mammalian cells, the enzyme is composed of four different chains: alpha, beta, gamma, and delta. The product of this gene is a beta chain. It is possible that distinct isoforms of this chain have different cellular localizations and interact differently with calmodulin. Alternative splicing results in multiple transcript variants. [provided by RefSeq, May 2014]

Synonyms: CAM2; CAMK2; CAMKB

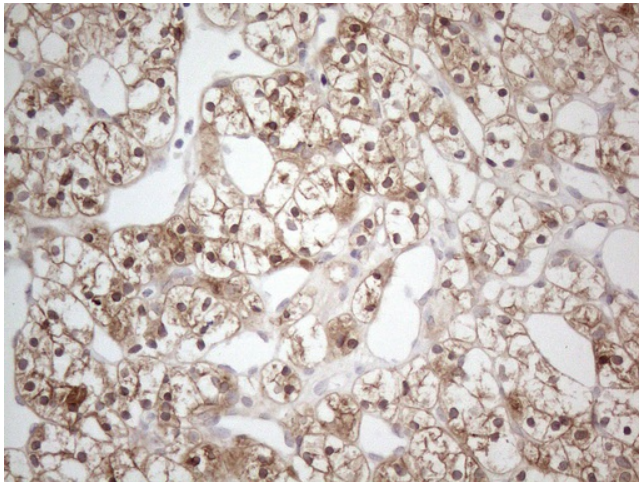
Protein Families: Druggable Genome, Protein Kinase

Protein Pathways: Calcium signaling pathway, ErbB signaling pathway, Glioma, GnRH signaling pathway, Long-term potentiation, Melanogenesis, Neurotrophin signaling pathway, Olfactory transduction, Oocyte meiosis, Wnt signaling pathway

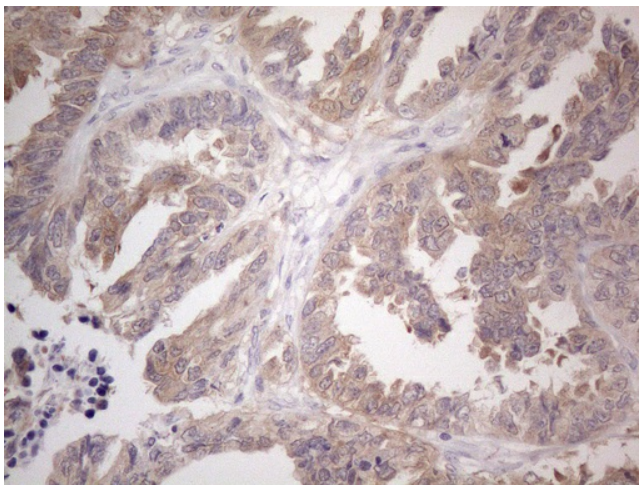
Product images:



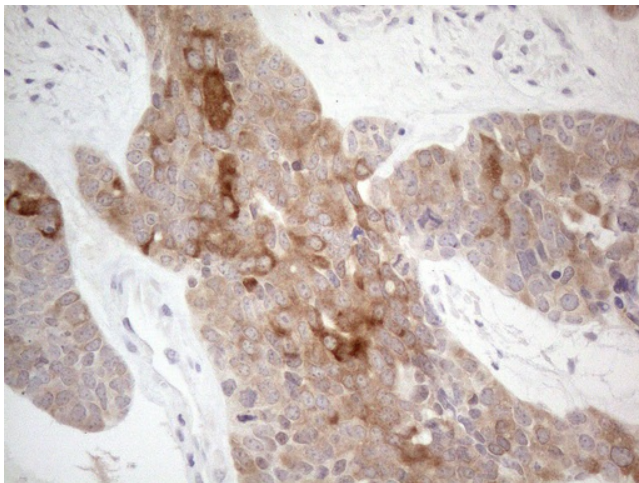
HEK293T cells were transfected with the pCMV6-ENTRY control (Cat# [PS100001], Left lane) or pCMV6-ENTRY CAMK2B (Cat# [RC215639], Right lane) cDNA for 48 hrs and lysed. Equivalent amounts of cell lysates (5 ug per lane) were separated by SDS-PAGE and immunoblotted with anti-CAMK2B (1:2000) (Cat# [TA808345]). Positive lysates [LY420062] (100ug) and [LC420062] (20ug) can be purchased separately from OriGene.



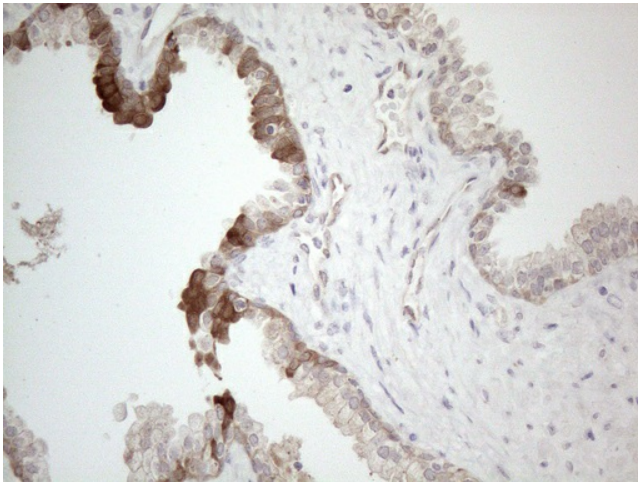
Immunohistochemical staining of paraffin-embedded Carcinoma of Human kidney tissue using anti-CAMK2B mouse monoclonal antibody. (Heat-induced epitope retrieval by 1mM EDTA in 10mM Tris buffer (pH8.5) at 120°C for 3min, [TA808345]) (1:150)



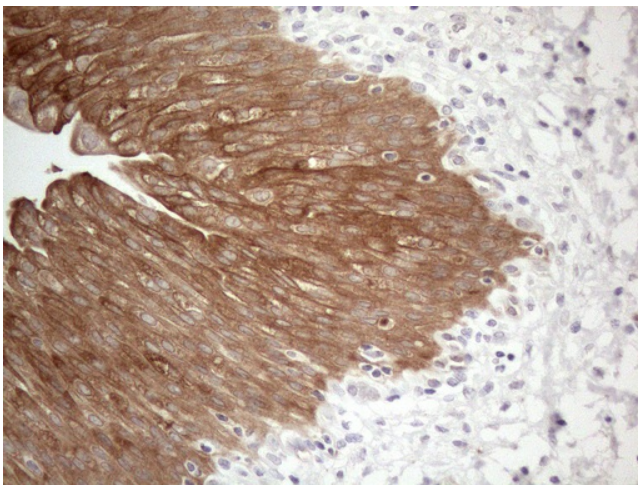
Immunohistochemical staining of paraffin-embedded Adenocarcinoma of Human ovary tissue using anti-CAMK2B mouse monoclonal antibody. (Heat-induced epitope retrieval by 1mM EDTA in 10mM Tris buffer (pH8.5) at 120°C for 3min, [TA808345]) (1:150)



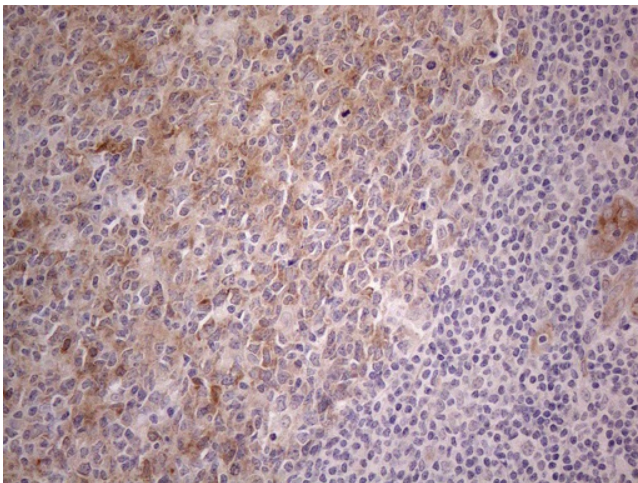
Immunohistochemical staining of paraffin-embedded Adenocarcinoma of Human endometrium tissue using anti-CAMK2B mouse monoclonal antibody. (Heat-induced epitope retrieval by 1mM EDTA in 10mM Tris buffer (pH8.5) at 120°C for 3min, [TA808345]) (1:150)



Immunohistochemical staining of paraffin-embedded Carcinoma of Human prostate tissue using anti-CAMK2B mouse monoclonal antibody. (Heat-induced epitope retrieval by 1mM EDTA in 10mM Tris buffer (pH8.5) at 120°C for 3min, [TA808345]) (1:150)



Immunohistochemical staining of paraffin-embedded Human bladder tissue within the normal limits using anti-CAMK2B mouse monoclonal antibody. (Heat-induced epitope retrieval by 1mM EDTA in 10mM Tris buffer (pH8.5) at 120°C for 3min, [TA808345]) (1:150)



Immunohistochemical staining of paraffin-embedded Human tonsil within the normal limits using anti-CAMK2B mouse monoclonal antibody. (Heat-induced epitope retrieval by 1mM EDTA in 10mM Tris buffer (pH8.5) at 120°C for 3min, [TA808345]) (1:150)