

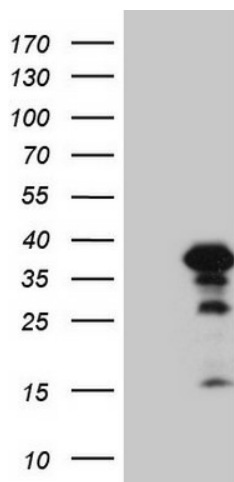
## Product datasheet for **TA808343M**

### ZC3H8 Mouse Monoclonal Antibody [Clone ID: OTI13F2]

#### Product data:

Product Type:	Primary Antibodies
Clone Name:	OTI13F2
Applications:	WB
Recommended Dilution:	WB 1:2000
Reactivity:	Human
Host:	Mouse
Isotype:	IgG1
Clonality:	Monoclonal
Immunogen:	Full length human recombinant protein of human ZC3H8(NP_115883) produced in E.coli.
Formulation:	PBS (pH 7.3) containing 1% BSA, 50% glycerol and 0.02% sodium azide.
Concentration:	1 mg/ml
Purification:	Purified from mouse ascites fluids or tissue culture supernatant by affinity chromatography (protein A/G)
Conjugation:	Unconjugated
Storage:	Store at -20°C as received.
Stability:	Stable for 12 months from date of receipt.
Predicted Protein Size:	33.4 kDa
Gene Name:	zinc finger CCCH-type containing 8
Database Link:	<a href="#">NP_115883</a> <a href="#">Entrez Gene 84524 Human</a> <a href="#">Q8N5P1</a>
Synonyms:	Fliz1; ZC3HDC8

[View online »](#)

**Product images:**


HEK293T cells were transfected with the pCMV6-ENTRY control (Left lane) or pCMV6-ENTRY ZC3H8 ([RC204522], Right lane) cDNA for 48 hrs and lysed. Equivalent amounts of cell lysates (5 ug per lane) were separated by SDS-PAGE and immunoblotted with anti-ZC3H8 (1:2000). Positive lysates [LY410072] (100ug) and [LC410072] (20ug) can be purchased separately from OriGene.