

## Product datasheet for **TA808304S**

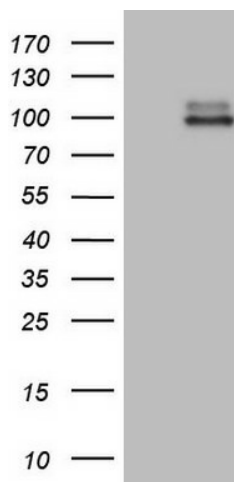
### LGR5 Mouse Monoclonal Antibody [Clone ID: OTI11C2]

#### Product data:

Product Type:	Primary Antibodies
Clone Name:	OTI11C2
Applications:	WB
Recommended Dilution:	WB 1:2000
Reactivity:	Human, Mouse, Rat
Host:	Mouse
Isotype:	IgG2b
Clonality:	Monoclonal
Immunogen:	Human recombinant protein fragment corresponding to amino acids 22-543 of human LGR5 (NP_003658) produced in HEK293 cell.
Formulation:	PBS (pH 7.3) containing 1% BSA, 50% glycerol and 0.02% sodium azide.
Concentration:	1 mg/ml
Purification:	Purified from mouse ascites fluids or tissue culture supernatant by affinity chromatography (protein A/G)
Conjugation:	Unconjugated
Storage:	Store at -20°C as received.
Stability:	Stable for 12 months from date of receipt.
Predicted Protein Size:	99.8 kDa
Gene Name:	leucine-rich repeat containing G protein-coupled receptor 5
Database Link:	<a href="#">NP_003658</a> <a href="#">Entrez Gene 14160 Mouse</a> <a href="#">Entrez Gene 299802 Rat</a> <a href="#">Entrez Gene 8549 Human</a> <a href="#">O75473</a>
Synonyms:	FEX; GPR49; GPR67; GRP49; HG38
Protein Families:	Druggable Genome, GPCR, Transmembrane



[View online »](#)

**Product images:**

HEK293T cells were transfected with the pCMV6-ENTRY control (Left lane) or pCMV6-ENTRY LGR5 ([RC212825], Right lane) cDNA for 48 hrs and lysed. Equivalent amounts of cell lysates (5 ug per lane) were separated by SDS-PAGE and immunoblotted with anti-LGR5 (1:2000). Positive lysates [LY401213] (100ug) and [LC401213] (20ug) can be purchased separately from OriGene.