

Product datasheet for **TA808292BM**

Prostate Specific Antigen (KLK3) Mouse Monoclonal Antibody (HRP conjugated) [Clone ID: OTI3C8]

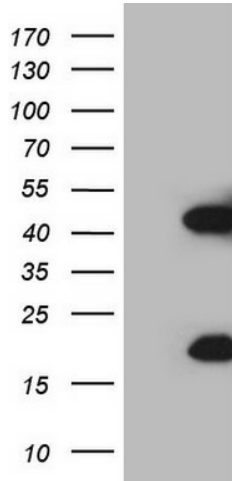
Product data:

Product Type:	Primary Antibodies
Clone Name:	OTI3C8
Applications:	WB
Recommended Dilution:	WB 1:2000
Reactivity:	Human
Host:	Mouse
Isotype:	IgG2b
Clonality:	Monoclonal
Immunogen:	Human recombinant protein fragment corresponding to amino acids 25-261 of human KLK3(NP_001639) produced in E.coli.
Formulation:	PBS (pH 7.3) containing 1% BSA, 50% glycerol.
Concentration:	0.5 mg/ml
Purification:	Purified from mouse ascites fluids or tissue culture supernatant by affinity chromatography (protein A/G)
Conjugation:	HRP
Storage:	Store at -20°C as received.
Stability:	Stable for 12 months from date of receipt.
Predicted Protein Size:	26.8 kDa
Gene Name:	kallikrein related peptidase 3
Database Link:	NP_001639 Entrez Gene 354 Human P07288
Synonyms:	APS; hK3; KLK2A1; PSA
Protein Families:	Druggable Genome, Protease, Secreted Protein
Protein Pathways:	Pathways in cancer, Prostate cancer



[View online »](#)

Product images:



HEK293T cells were transfected with the pCMV6-ENTRY control (Left lane) or pCMV6-ENTRY KLK3 ([RC202740], Right lane) cDNA for 48 hrs and lysed. Equivalent amounts of cell lysates (5 ug per lane) were separated by SDS-PAGE and immunoblotted with anti-KLK3 (1:2000). Positive lysates [LY419823] (100ug) and [LC419823] (20ug) can be purchased separately from OriGene.