

Product datasheet for **TA808282M**

Neuropeptide Y (NPY) Mouse Monoclonal Antibody [Clone ID: OTI8F8]

Product data:

Product Type:	Primary Antibodies
Clone Name:	OTI8F8
Applications:	WB
Recommended Dilution:	WB 1:2000
Reactivity:	Human, Mouse, Rat
Host:	Mouse
Isotype:	IgG2a
Clonality:	Monoclonal
Immunogen:	Full length human recombinant protein of human NPY (NP_000896) produced in E.coli.
Formulation:	PBS (pH 7.3) containing 1% BSA, 50% glycerol and 0.02% sodium azide.
Concentration:	1 mg/ml
Purification:	Purified from mouse ascites fluids or tissue culture supernatant by affinity chromatography (protein A/G)
Conjugation:	Unconjugated
Storage:	Store at -20°C as received.
Stability:	Stable for 12 months from date of receipt.
Predicted Protein Size:	8 kDa
Gene Name:	neuropeptide Y
Database Link:	NP_000896 Entrez Gene 24604 Rat Entrez Gene 109648 Mouse Entrez Gene 4852 Human P01303



[View online »](#)

Background:

This gene encodes a neuropeptide that is widely expressed in the central nervous system and influences many physiological processes, including cortical excitability, stress response, food intake, circadian rhythms, and cardiovascular function. The neuropeptide functions through G protein-coupled receptors to inhibit adenylyl cyclase, activate mitogen-activated protein kinase (MAPK), regulate intracellular calcium levels, and activate potassium channels. A polymorphism in this gene resulting in a change of leucine 7 to proline in the signal peptide is associated with elevated cholesterol levels, higher alcohol consumption, and may be a risk factor for various metabolic and cardiovascular diseases. [provided by RefSeq, Nov 2009]

Synonyms:

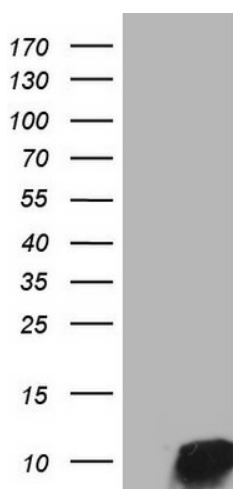
PYY4

Protein Families:

Druggable Genome, Secreted Protein, Transmembrane

Protein Pathways:

Adipocytokine signaling pathway

Product images:


HEK293T cells were transfected with the pCMV6-ENTRY control (Cat# [PS100001], Left lane) or pCMV6-ENTRY NPY (Cat# [RC206056], Right lane) cDNA for 48 hrs and lysed. Equivalent amounts of cell lysates (5 ug per lane) were separated by SDS-PAGE and immunoblotted with anti-NPY (Cat# [TA808282])(1:2000).