

Product datasheet for **TA808273AM**

LOC100287896 Mouse Monoclonal Antibody (Biotin conjugated) [Clone ID: OTI2A11]

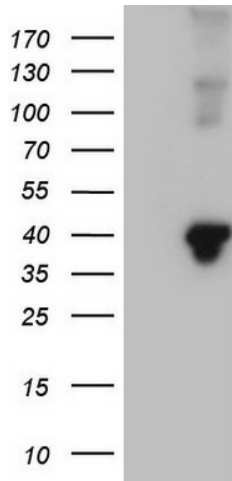
Product data:

Product Type:	Primary Antibodies
Clone Name:	OTI2A11
Applications:	IHC, WB
Recommended Dilution:	WB 1:2000, IHC 1:150
Reactivity:	Human
Host:	Mouse
Isotype:	IgG1
Clonality:	Monoclonal
Immunogen:	Full length human recombinant protein of human MGC12965(NP_940921) produced in E.coli.
Formulation:	PBS (pH 7.3) containing 1% BSA, 50% glycerol and 0.02% sodium azide.
Concentration:	0.5 mg/ml
Purification:	Purified from mouse ascites fluids or tissue culture supernatant by affinity chromatography (protein A/G)
Conjugation:	Biotin
Storage:	Store at -20°C as received.
Stability:	Stable for 12 months from date of receipt.
Predicted Protein Size:	34.8 kDa
Gene Name:	uncharacterized LOC100287896
Database Link:	NP_940921 Entrez Gene 374408 Entrez Gene 100287896 Human

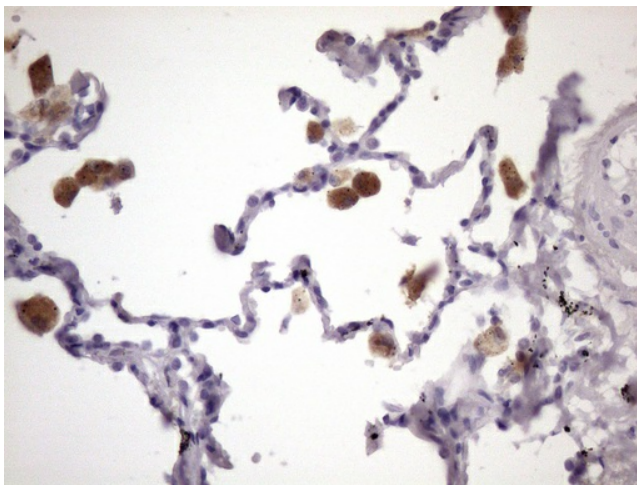


[View online »](#)

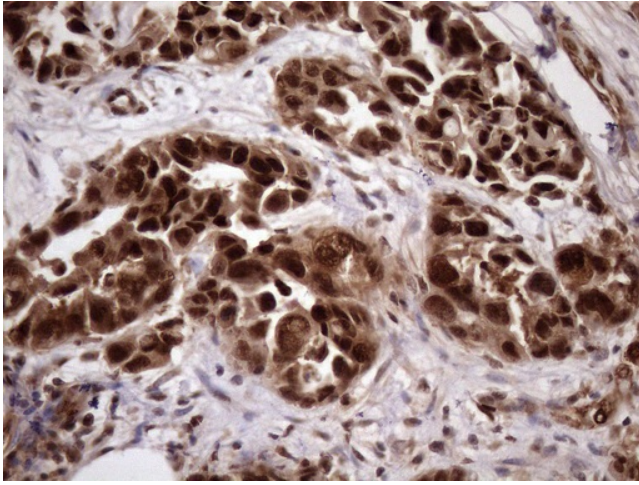
Product images:



HEK293T cells were transfected with the pCMV6-ENTRY control (Left lane) or pCMV6-ENTRY MGC12965 ([RC202962], Right lane) cDNA for 48 hrs and lysed. Equivalent amounts of cell lysates (5 ug per lane) were separated by SDS-PAGE and immunoblotted with anti-MGC12965 (1:2000). Positive lysates [LY404904] (100ug) and [LC404904] (20ug) can be purchased separately from OriGene.



Immunohistochemical staining of paraffin-embedded Human lung tissue within the normal limits using anti-MGC12965 mouse monoclonal antibody. (Heat-induced epitope retrieval by 1mM EDTA in 10mM Tris buffer (pH8.5) at 120°C for 3min, [TA808273]) (1:150)



Immunohistochemical staining of paraffin-embedded Adenocarcinoma of Human endometrium tissue using anti-MGC12965 mouse monoclonal antibody. (Heat-induced epitope retrieval by 1mM EDTA in 10mM Tris buffer (pH8.5) at 120°C for 3min, [TA808273]) (1:150)