

## Product datasheet for **TA808272**

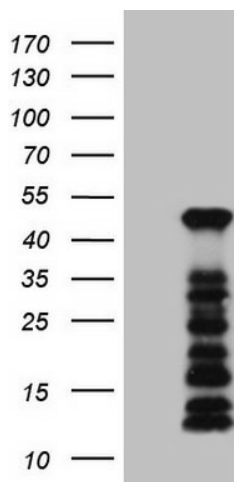
### **KMT5A Mouse Monoclonal Antibody [Clone ID: OTI2F5]**

#### **Product data:**

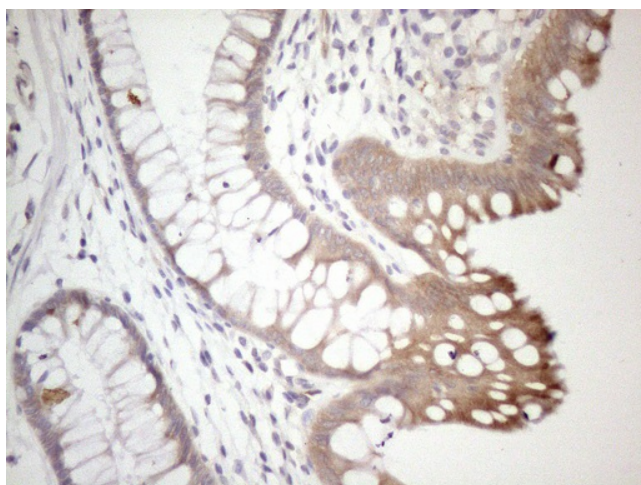
Product Type:	Primary Antibodies
Clone Name:	OTI2F5
Applications:	IHC, WB
Recommended Dilution:	WB 1:2000, IHC 1:150
Reactivity:	Human
Host:	Mouse
Isotype:	IgG1
Clonality:	Monoclonal
Immunogen:	Full length human recombinant protein of human SETD8(NP_065115) produced in E.coli.
Formulation:	PBS (pH 7.3) containing 1% BSA, 50% glycerol and 0.02% sodium azide.
Concentration:	1 mg/ml
Purification:	Purified from mouse ascites fluids or tissue culture supernatant by affinity chromatography (protein A/G)
Conjugation:	Unconjugated
Storage:	Store at -20°C as received.
Stability:	Stable for 12 months from date of receipt.
Predicted Protein Size:	39 kDa
Gene Name:	lysine methyltransferase 5A
Database Link:	<a href="#">NP_065115</a> <a href="#">Entrez Gene 387893 Human</a> <a href="#">Q9NQR1</a>
Synonyms:	PR-Set7; SET07; SET8; SETD8
Protein Families:	Druggable Genome
Protein Pathways:	Lysine degradation



[View online »](#)

**Product images:**

HEK293T cells were transfected with the pCMV6-ENTRY control (Left lane) or pCMV6-ENTRY SETD8 ([RC208219], Right lane) cDNA for 48 hrs and lysed. Equivalent amounts of cell lysates (5 ug per lane) were separated by SDS-PAGE and immunoblotted with anti-SETD8 (1:2000). Positive lysates [LY402778] (100ug) and [LC402778] (20ug) can be purchased separately from OriGene.



Immunohistochemical staining of paraffin-embedded Human colon tissue within the normal limits using anti-SETD8 mouse monoclonal antibody. (Heat-induced epitope retrieval by 1mM EDTA in 10mM Tris buffer (pH8.5) at 120°C for 3min, TA808272) (1:150)