

## Product datasheet for **TA808271AM**

### **H2BC1 Mouse Monoclonal Antibody (Biotin conjugated) [Clone ID: OT11C9]**

#### **Product data:**

Product Type:	Primary Antibodies
Clone Name:	OT11C9
Applications:	IHC, WB
Recommended Dilution:	WB 1:2000, IHC 1:150
Reactivity:	Human, Mouse, Rat
Host:	Mouse
Isotype:	IgG1
Clonality:	Monoclonal
Immunogen:	Human recombinant protein fragment corresponding to amino acids 2-127 of human HIST1H2BA(NP_733759) produced in E.coli.
Formulation:	PBS (pH 7.3) containing 1% BSA, 50% glycerol and 0.02% sodium azide.
Concentration:	0.5 mg/ml
Purification:	Purified from mouse ascites fluids or tissue culture supernatant by affinity chromatography (protein A/G)
Conjugation:	Biotin
Storage:	Store at -20°C as received.
Stability:	Stable for 12 months from date of receipt.
Predicted Protein Size:	14 kDa
Gene Name:	histone cluster 1, H2ba
Database Link:	<a href="#">NP_733759</a> <a href="#">Entrez Gene 255626 Human</a> <a href="#">Q96A08</a>



[View online »](#)

**Background:**

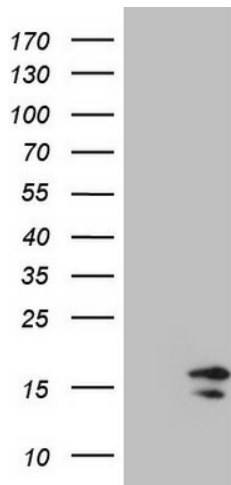
Histones are basic nuclear proteins that are responsible for the nucleosome structure of the chromosomal fiber in eukaryotes. Nucleosomes consist of approximately 146 bp of DNA wrapped around a histone octamer composed of pairs of each of the four core histones (H2A, H2B, H3, and H4). The chromatin fiber is further compacted through the interaction of a linker histone, H1, with the DNA between the nucleosomes to form higher order chromatin structures. This gene is intronless and encodes a testis/sperm-specific member of the histone H2B family. Transcripts from this gene contain a palindromic termination element. [provided by RefSeq, Jul 2008]

**Synonyms:**

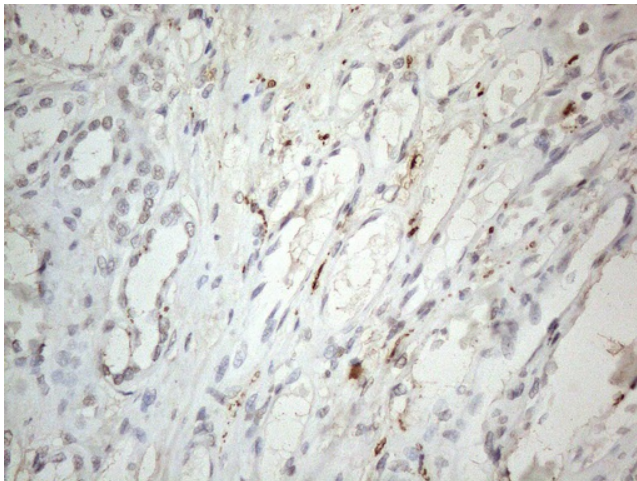
bA317E16.3; H2BFU; STBP; TH2B; TSH2B; TSH2B.1

**Protein Pathways:**

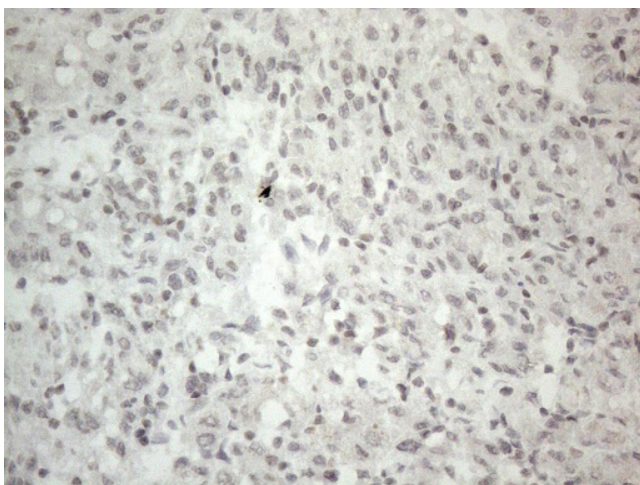
Systemic lupus erythematosus

**Product images:**


HEK293T cells were transfected with the pCMV6-ENTRY control (Cat# [PS100001], Left lane) or pCMV6-ENTRY HIST1H2BA (Cat# [RC215946], Right lane) cDNA for 48 hrs and lysed. Equivalent amounts of cell lysates (5 ug per lane) were separated by SDS-PAGE and immunoblotted with anti-HIST1H2BA (Cat# [TA808271])(1:2000). Positive lysates [LY406917] (100ug) and [LC406917] (20ug) can be purchased separately from OriGene.



Immunohistochemical staining of paraffin-embedded Human Kidney tissue within the normal limits using anti-HIST1H2BA mouse monoclonal antibody. (Heat-induced epitope retrieval by 1mM EDTA in 10mM Tris buffer (pH8.5) at 120°C for 3min, [TA808271]) (1:150)



Immunohistochemical staining of paraffin-embedded Human liver tissue within the normal limits using anti-HIST1H2BA mouse monoclonal antibody. (Heat-induced epitope retrieval by 1mM EDTA in 10mM Tris buffer (pH8.5) at 120°C for 3min, [TA808271]) (1:150)