

Product datasheet for **TA808270**

Telethonin (TCAP) Mouse Monoclonal Antibody [Clone ID: OTI5E12]

Product data:

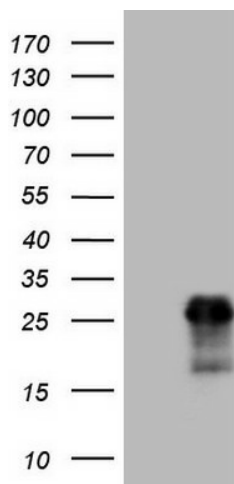
Product Type:	Primary Antibodies
Clone Name:	OTI5E12
Applications:	WB
Recommended Dilution:	WB 1:2000
Reactivity:	Human, Mouse
Host:	Mouse
Isotype:	IgG2a
Clonality:	Monoclonal
Immunogen:	Full length human recombinant protein of human TCAP (NP_003664) produced in E.coli.
Formulation:	PBS (pH 7.3) containing 1% BSA, 50% glycerol and 0.02% sodium azide.
Concentration:	1 mg/ml
Purification:	Purified from mouse ascites fluids or tissue culture supernatant by affinity chromatography (protein A/G)
Conjugation:	Unconjugated
Storage:	Store at -20°C as received.
Stability:	Stable for 12 months from date of receipt.
Predicted Protein Size:	18.9 kDa
Gene Name:	titin-cap
Database Link:	NP_003664 Entrez Gene 21393 Mouse Entrez Gene 8557 Human O15273

Background: Sarcomere assembly is regulated by the muscle protein titin. Titin is a giant elastic protein with kinase activity that extends half the length of a sarcomere. It serves as a scaffold to which myofibrils and other muscle related proteins are attached. This gene encodes a protein found in striated and cardiac muscle that binds to the titin Z1-Z2 domains and is a substrate of titin kinase, interactions thought to be critical to sarcomere assembly. Mutations in this gene are associated with limb-girdle muscular dystrophy type 2G. [provided by RefSeq, Jul 2008]


[View online »](#)

Synonyms: CMD1N; CMH25; LGMD2G; T-cap; TELE; telethonin

Product images:



HEK293T cells were transfected with the pCMV6-ENTRY control (Left lane) or pCMV6-ENTRY TCAP ([RC203158], Right lane) cDNA for 48 hrs and lysed. Equivalent amounts of cell lysates (5 ug per lane) were separated by SDS-PAGE and immunoblotted with anti-TCAP (1:2000). Positive lysates [LY401215] (100ug) and [LC401215] (20ug) can be purchased separately from OriGene.