

Product datasheet for **TA808265AM**

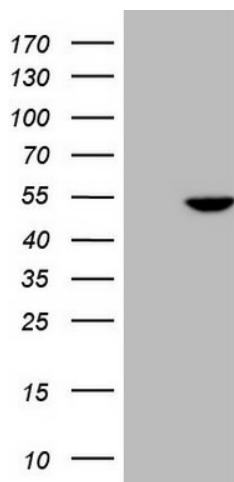
ATP6V1C2 Mouse Monoclonal Antibody (Biotin conjugated) [Clone ID: OTI1G10]

Product data:

Product Type:	Primary Antibodies
Clone Name:	OTI1G10
Applications:	WB
Recommended Dilution:	WB 1:2000
Reactivity:	Human, Mouse, Rat
Host:	Mouse
Isotype:	IgG1
Clonality:	Monoclonal
Immunogen:	Full length human recombinant protein of human ATP6V1C2(NP_653184) produced in E.coli.
Formulation:	PBS (pH 7.3) containing 1% BSA, 50% glycerol and 0.02% sodium azide.
Concentration:	0.5 mg/ml
Purification:	Purified from mouse ascites fluids or tissue culture supernatant by affinity chromatography (protein A/G)
Conjugation:	Biotin
Storage:	Store at -20°C as received.
Stability:	Stable for 12 months from date of receipt.
Predicted Protein Size:	43.7 kDa
Gene Name:	ATPase H ⁺ transporting V1 subunit C2
Database Link:	NP_653184 Entrez Gene 68775 Mouse Entrez Gene 362802 Rat Entrez Gene 245973 Human Q8NEY4
Synonyms:	ATP6C2; VMA5
Protein Pathways:	Epithelial cell signaling in Helicobacter pylori infection, Metabolic pathways, Oxidative phosphorylation, Vibrio cholerae infection



[View online »](#)

Product images:

HEK293T cells were transfected with the pCMV6-ENTRY control (Left lane) or pCMV6-ENTRY ATP6V1C2 ([RC204218], Right lane) cDNA for 48 hrs and lysed. Equivalent amounts of cell lysates (5 ug per lane) were separated by SDS-PAGE and immunoblotted with anti-ATP6V1C2 (1:2000). Positive lysates [LY408291] (100ug) and [LC408291] (20ug) can be purchased separately from OriGene.