

Product datasheet for **TA808260M**

LOC100287896 Mouse Monoclonal Antibody [Clone ID: OTI3H8]

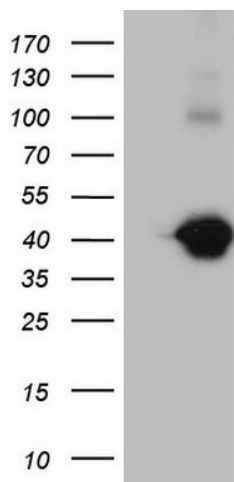
Product data:

Product Type:	Primary Antibodies
Clone Name:	OTI3H8
Applications:	WB
Recommended Dilution:	WB 1:2000
Reactivity:	Human
Host:	Mouse
Isotype:	IgG1
Clonality:	Monoclonal
Immunogen:	Full length human recombinant protein of human MGC12965(NP_940921) produced in E.coli.
Formulation:	PBS (pH 7.3) containing 1% BSA, 50% glycerol and 0.02% sodium azide.
Concentration:	1 mg/ml
Purification:	Purified from mouse ascites fluids or tissue culture supernatant by affinity chromatography (protein A/G)
Conjugation:	Unconjugated
Storage:	Store at -20°C as received.
Stability:	Stable for 12 months from date of receipt.
Predicted Protein Size:	34.8 kDa
Gene Name:	uncharacterized LOC100287896
Database Link:	NP_940921 Entrez Gene 374408 Entrez Gene 100287896 Human



[View online »](#)

Product images:



HEK293T cells were transfected with the pCMV6-ENTRY control (Left lane) or pCMV6-ENTRY MGC12965 ([RC202962], Right lane) cDNA for 48 hrs and lysed. Equivalent amounts of cell lysates (5 ug per lane) were separated by SDS-PAGE and immunoblotted with anti-MGC12965 (1:2000). Positive lysates [LY404904] (100ug) and [LC404904] (20ug) can be purchased separately from OriGene.