

## Product datasheet for **TA808258BM**

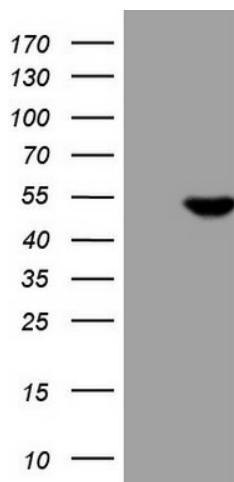
### ATP6V1C2 Mouse Monoclonal Antibody (HRP conjugated) [Clone ID: OTI8C2]

#### Product data:

Product Type:	Primary Antibodies
Clone Name:	OTI8C2
Applications:	WB
Recommended Dilution:	WB 1:2000
Reactivity:	Human, Mouse, Rat
Host:	Mouse
Isotype:	IgG2a
Clonality:	Monoclonal
Immunogen:	Full length human recombinant protein of human ATP6V1C2(NP_653184) produced in E.coli.
Formulation:	PBS (pH 7.3) containing 1% BSA, 50% glycerol.
Concentration:	0.5 mg/ml
Purification:	Purified from mouse ascites fluids or tissue culture supernatant by affinity chromatography (protein A/G)
Conjugation:	HRP
Storage:	Store at -20°C as received.
Stability:	Stable for 12 months from date of receipt.
Predicted Protein Size:	43.7 kDa
Gene Name:	ATPase H <sup>+</sup> transporting V1 subunit C2
Database Link:	<a href="#">NP_653184</a> <a href="#">Entrez Gene 68775 Mouse</a> <a href="#">Entrez Gene 362802 Rat</a> <a href="#">Entrez Gene 245973 Human</a> <a href="#">Q8NEY4</a>
Synonyms:	ATP6C2; VMA5
Protein Pathways:	Epithelial cell signaling in Helicobacter pylori infection, Metabolic pathways, Oxidative phosphorylation, Vibrio cholerae infection



[View online »](#)

**Product images:**

HEK293T cells were transfected with the pCMV6-ENTRY control (Left lane) or pCMV6-ENTRY ATP6V1C2 ([RC204218], Right lane) cDNA for 48 hrs and lysed. Equivalent amounts of cell lysates (5 ug per lane) were separated by SDS-PAGE and immunoblotted with anti-ATP6V1C2 (1:2000). Positive lysates [LY408291] (100ug) and [LC408291] (20ug) can be purchased separately from OriGene.