

Product datasheet for **TA808247AM**

Interferon alpha 6 (IFNA6) Mouse Monoclonal Antibody (Biotin conjugated) [Clone ID: OTI2A10]

Product data:

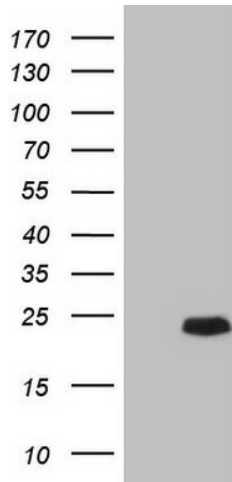
Product Type:	Primary Antibodies
Clone Name:	OTI2A10
Applications:	WB
Recommended Dilution:	WB 1:2000
Reactivity:	Human
Host:	Mouse
Isotype:	IgG1
Clonality:	Monoclonal
Immunogen:	Full length human recombinant protein of human IFNA6(NP_066282) produced in E.coli.
Formulation:	PBS (pH 7.3) containing 1% BSA, 50% glycerol and 0.02% sodium azide.
Concentration:	0.5 mg/ml
Purification:	Purified from mouse ascites fluids or tissue culture supernatant by affinity chromatography (protein A/G)
Conjugation:	Biotin
Storage:	Store at -20°C as received.
Stability:	Stable for 12 months from date of receipt.
Predicted Protein Size:	19.7 kDa
Gene Name:	interferon alpha 6
Database Link:	NP_066282 Entrez Gene 3443 Human P05013
Synonyms:	IFN-alphaK
Protein Families:	Druggable Genome, Secreted Protein



[View online »](#)

Protein Pathways:

Antigen processing and presentation, Autoimmune thyroid disease, Cytokine-cytokine receptor interaction, Cytosolic DNA-sensing pathway, Jak-STAT signaling pathway, Natural killer cell mediated cytotoxicity, Regulation of autophagy, RIG-I-like receptor signaling pathway, Toll-like receptor signaling pathway

Product images:

HEK293T cells were transfected with the pCMV6-ENTRY control (Cat# [PS100001], Left lane) or pCMV6-ENTRY IFNA6 (Cat# [RC210122], Right lane) cDNA for 48 hrs and lysed. Equivalent amounts of cell lysates (5 ug per lane) were separated by SDS-PAGE and immunoblotted with anti-IFNA6 (Cat# [TA808247])(1:2000). Positive lysates [LY412098] (100ug) and [LC412098] (20ug) can be purchased separately from OriGene.