

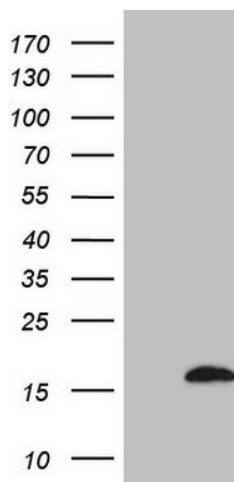
Product datasheet for **TA808245M**

C4orf36 Mouse Monoclonal Antibody [Clone ID: OTI4F6]

Product data:

Product Type:	Primary Antibodies
Clone Name:	OTI4F6
Applications:	WB
Recommended Dilution:	WB 1:2000
Reactivity:	Human
Host:	Mouse
Isotype:	IgG1
Clonality:	Monoclonal
Immunogen:	Full length human recombinant protein of human C4orf36(NP_653246) produced in E.coli.
Formulation:	PBS (pH 7.3) containing 1% BSA, 50% glycerol and 0.02% sodium azide.
Concentration:	1 mg/ml
Purification:	Purified from mouse ascites fluids or tissue culture supernatant by affinity chromatography (protein A/G)
Conjugation:	Unconjugated
Storage:	Store at -20°C as received.
Stability:	Stable for 12 months from date of receipt.
Predicted Protein Size:	13.2 kDa
Gene Name:	chromosome 4 open reading frame 36
Database Link:	NP_653246 Entrez Gene 132989 Human Q96KX1
Synonyms:	MGC26744

[View online »](#)

Product images:


HEK293T cells were transfected with the pCMV6-ENTRY control (Left lane) or pCMV6-ENTRY C4orf36 ([RC205468], Right lane) cDNA for 48 hrs and lysed. Equivalent amounts of cell lysates (5 ug per lane) were separated by SDS-PAGE and immunoblotted with anti-C4orf36 (1:2000). Positive lysates [LY408187] (100ug) and [LC408187] (20ug) can be purchased separately from OriGene.