

## Product datasheet for **TA808239M**

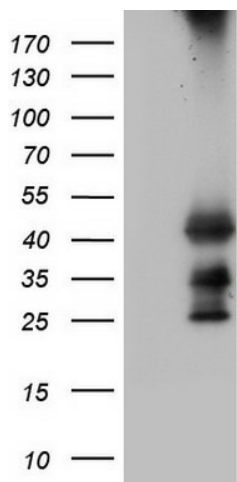
### TRBP (TARBP2) Mouse Monoclonal Antibody [Clone ID: OTI2C12]

#### Product data:

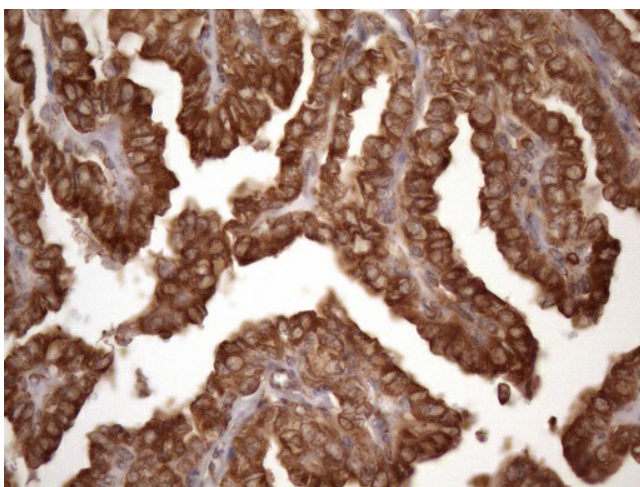
Product Type:	Primary Antibodies
Clone Name:	OTI2C12
Applications:	IHC, WB
Recommended Dilution:	WB 1:2000, IHC 1:150
Reactivity:	Human, Mouse, Rat
Host:	Mouse
Isotype:	IgG1
Clonality:	Monoclonal
Immunogen:	Full length human recombinant protein of human TARBP2 (NP_004169) produced in E.coli.
Formulation:	PBS (pH 7.3) containing 1% BSA, 50% glycerol and 0.02% sodium azide.
Concentration:	1 mg/ml
Purification:	Purified from mouse ascites fluids or tissue culture supernatant by affinity chromatography (protein A/G)
Conjugation:	Unconjugated
Storage:	Store at -20°C as received.
Stability:	Stable for 12 months from date of receipt.
Predicted Protein Size:	36.7 kDa
Gene Name:	TARBP2, RISC loading complex RNA binding subunit
Database Link:	<a href="#">NP_004169</a> <a href="#">Entrez Gene 21357 Mouse</a> <a href="#">Entrez Gene 363006 Rat</a> <a href="#">Entrez Gene 6895 Human</a> <a href="#">Q15633</a>
Synonyms:	LOQS; TRBP; TRBP1; TRBP2
Protein Families:	Stem cell - Pluripotency


[View online »](#)

## Product images:



HEK293T cells were transfected with the pCMV6-ENTRY control (Left lane) or pCMV6-ENTRY TARBP2 ([RC201043], Right lane) cDNA for 48 hrs and lysed. Equivalent amounts of cell lysates (5 ug per lane) were separated by SDS-PAGE and immunoblotted with anti-TARBP2 (1:2000). Positive lysates [LY418167] (100ug) and [LC418167] (20ug) can be purchased separately from OriGene.



Immunohistochemical staining of paraffin-embedded Carcinoma of Human thyroid tissue using anti-TARBP2 mouse monoclonal antibody. Heat-induced epitope retrieval by EDTA solution buffer pH 8.0 at 120°C for 3 min.