

Product datasheet for **TA808239BM**

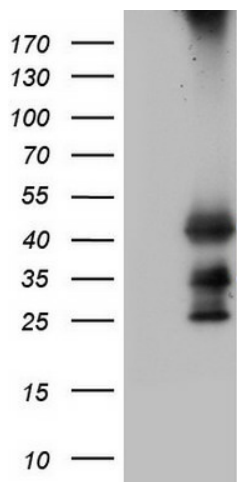
TRBP (TARBP2) Mouse Monoclonal Antibody (HRP conjugated) [Clone ID: OTI2C12]

Product data:

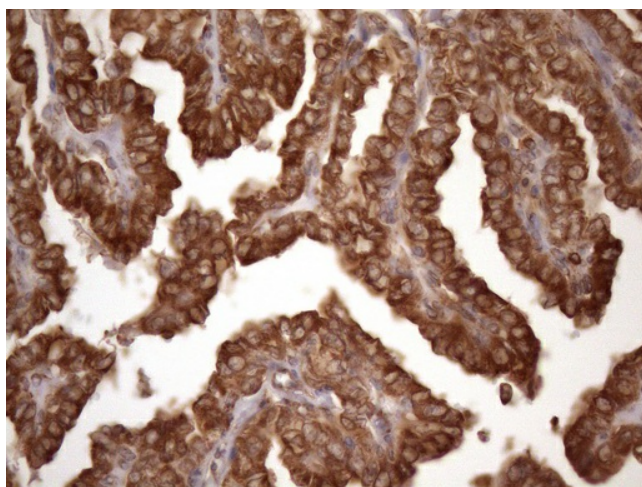
| | |
|-------------------------|--|
| Product Type: | Primary Antibodies |
| Clone Name: | OTI2C12 |
| Applications: | IHC, WB |
| Recommended Dilution: | WB 1:2000, IHC 1:150 |
| Reactivity: | Human, Mouse, Rat |
| Host: | Mouse |
| Isotype: | IgG1 |
| Clonality: | Monoclonal |
| Immunogen: | Full length human recombinant protein of human TARBP2 (NP_004169) produced in E.coli. |
| Formulation: | PBS (pH 7.3) containing 1% BSA, 50% glycerol. |
| Concentration: | 0.5 mg/ml |
| Purification: | Purified from mouse ascites fluids or tissue culture supernatant by affinity chromatography (protein A/G) |
| Conjugation: | HRP |
| Storage: | Store at -20°C as received. |
| Stability: | Stable for 12 months from date of receipt. |
| Predicted Protein Size: | 36.7 kDa |
| Gene Name: | TARBP2, RISC loading complex RNA binding subunit |
| Database Link: | NP_004169 Entrez Gene 21357 Mouse Entrez Gene 363006 Rat Entrez Gene 6895 Human Q15633 |
| Synonyms: | LOQS; TRBP; TRBP1; TRBP2 |
| Protein Families: | Stem cell - Pluripotency |



[View online »](#)

Product images:

HEK293T cells were transfected with the pCMV6-ENTRY control (Left lane) or pCMV6-ENTRY TARBP2 ([RC201043], Right lane) cDNA for 48 hrs and lysed. Equivalent amounts of cell lysates (5 ug per lane) were separated by SDS-PAGE and immunoblotted with anti-TARBP2 (1:2000). Positive lysates [LY418167] (100ug) and [LC418167] (20ug) can be purchased separately from OriGene.



Immunohistochemical staining of paraffin-embedded Carcinoma of Human thyroid tissue using anti-TARBP2 mouse monoclonal antibody. (Heat-induced epitope retrieval by 1mM EDTA in 10mM Tris buffer (pH8.5) at 120°C for 3min, [TA808239]) (1:150)