

Product datasheet for **TA808239AM**

TRBP (TARBP2) Mouse Monoclonal Antibody (Biotin conjugated) [Clone ID: OTI2C12]

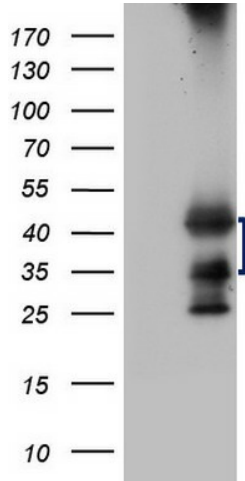
Product data:

Product Type:	Primary Antibodies
Clone Name:	OTI2C12
Applications:	IHC, WB
Recommended Dilution:	WB 1:2000, IHC 1:150
Reactivity:	Human, Mouse, Rat
Host:	Mouse
Isotype:	IgG1
Clonality:	Monoclonal
Immunogen:	Full length human recombinant protein of human TARBP2 (NP_004169) produced in E.coli.
Formulation:	PBS (pH 7.3) containing 1% BSA, 50% glycerol and 0.02% sodium azide.
Concentration:	0.5 mg/ml
Purification:	Purified from mouse ascites fluids or tissue culture supernatant by affinity chromatography (protein A/G)
Conjugation:	Biotin
Storage:	Store at -20°C as received.
Stability:	Stable for 12 months from date of receipt.
Predicted Protein Size:	36.7 kDa
Gene Name:	TARBP2, RISC loading complex RNA binding subunit
Database Link:	NP_004169 Entrez Gene 21357 Mouse Entrez Gene 363006 Rat Entrez Gene 6895 Human Q15633
Synonyms:	LOQS; TRBP; TRBP1; TRBP2
Protein Families:	Stem cell - Pluripotency

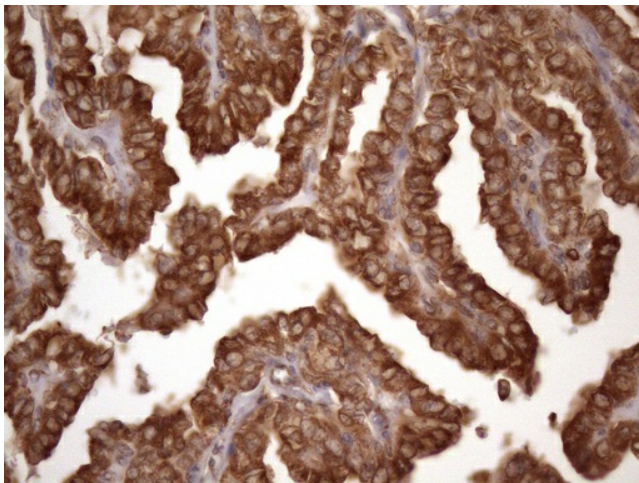


[View online »](#)

Product images:



HEK293T cells were transfected with the pCMV6-ENTRY control (Left lane) or pCMV6-ENTRY TARBP2 ([RC201043], Right lane) cDNA for 48 hrs and lysed. Equivalent amounts of cell lysates (5 ug per lane) were separated by SDS-PAGE and immunoblotted with anti-TARBP2 (1:2000). Positive lysates [LY418167] (100ug) and [LC418167] (20ug) can be purchased separately from OriGene.



Immunohistochemical staining of paraffin-embedded Carcinoma of Human thyroid tissue using anti-TARBP2 mouse monoclonal antibody. (Heat-induced epitope retrieval by 1mM EDTA in 10mM Tris buffer (pH8.5) at 120°C for 3min, [TA808239]) (1:150)