

## Product datasheet for **TA808227AM**

### **VAM1 (MPP6) Mouse Monoclonal Antibody (Biotin conjugated) [Clone ID: OTI3H5]**

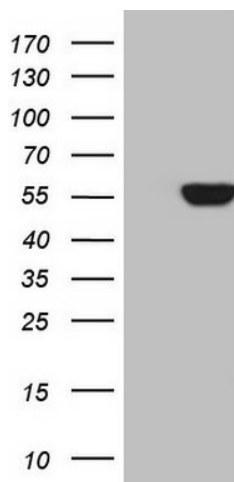
#### **Product data:**

Product Type:	Primary Antibodies
Clone Name:	OTI3H5
Applications:	WB
Recommended Dilution:	WB 1:2000
Reactivity:	Human, Mouse, Rat
Host:	Mouse
Isotype:	IgG1
Clonality:	Monoclonal
Immunogen:	Full length human recombinant protein of human MPP6(NP_057531) produced in E.coli.
Formulation:	PBS (pH 7.3) containing 1% BSA, 50% glycerol and 0.02% sodium azide.
Concentration:	0.5 mg/ml
Purification:	Purified from mouse ascites fluids or tissue culture supernatant by affinity chromatography (protein A/G)
Conjugation:	Biotin
Storage:	Store at -20°C as received.
Stability:	Stable for 12 months from date of receipt.
Predicted Protein Size:	60.9 kDa
Gene Name:	membrane palmitoylated protein 6
Database Link:	<a href="#">NP_057531</a> <a href="#">Entrez Gene 56524 Mouse</a> <a href="#">Entrez Gene 362359 Rat</a> <a href="#">Entrez Gene 51678 Human</a> <a href="#">Q9NZW5</a>
Synonyms:	p55T; PALS2; VAM-1; VAM1
Protein Families:	Druggable Genome, Stem cell - Pluripotency



[View online »](#)

## Product images:



HEK293T cells were transfected with the pCMV6-ENTRY control (Cat# [PS100001], Left lane) or pCMV6-ENTRY MPP6 (Cat# [RC205667], Right lane) cDNA for 48 hrs and lysed. Equivalent amounts of cell lysates (5 ug per lane) were separated by SDS-PAGE and immunoblotted with anti-MPP6 (Cat# [TA808227])(1:2000). Positive lysates [LY402551] (100ug) and [LC402551] (20ug) can be purchased separately from OriGene.