

## Product datasheet for **TA808225AM**

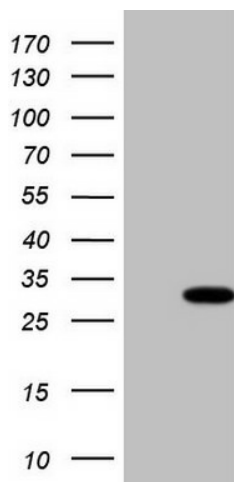
### **TBC1D28 Mouse Monoclonal Antibody (Biotin conjugated) [Clone ID: OTI4A9]**

#### **Product data:**

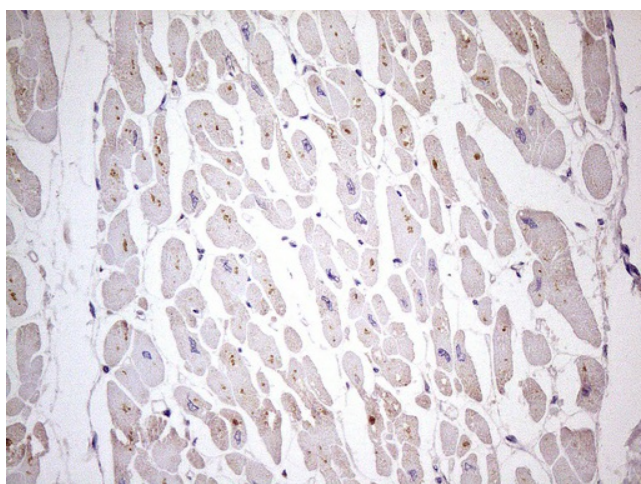
Product Type:	Primary Antibodies
Clone Name:	OTI4A9
Applications:	IHC, WB
Recommended Dilution:	WB 1:2000, IHC 1:150
Reactivity:	Human
Host:	Mouse
Isotype:	IgG2a
Clonality:	Monoclonal
Immunogen:	Full length human recombinant protein of human TBC1D28 (NP_001034486) produced in E.coli.
Formulation:	PBS (pH 7.3) containing 1% BSA, 50% glycerol and 0.02% sodium azide.
Concentration:	0.5 mg/ml
Purification:	Purified from mouse ascites fluids or tissue culture supernatant by affinity chromatography (protein A/G)
Conjugation:	Biotin
Storage:	Store at -20°C as received.
Stability:	Stable for 12 months from date of receipt.
Predicted Protein Size:	23.9 kDa
Gene Name:	TBC1 domain family member 28
Database Link:	<a href="#">NP_001034486</a> <a href="#">Entrez Gene 254272 Human</a> <a href="#">Q2M2D7</a>
Synonyms:	FLJ40244; MGC138217; MGC138221



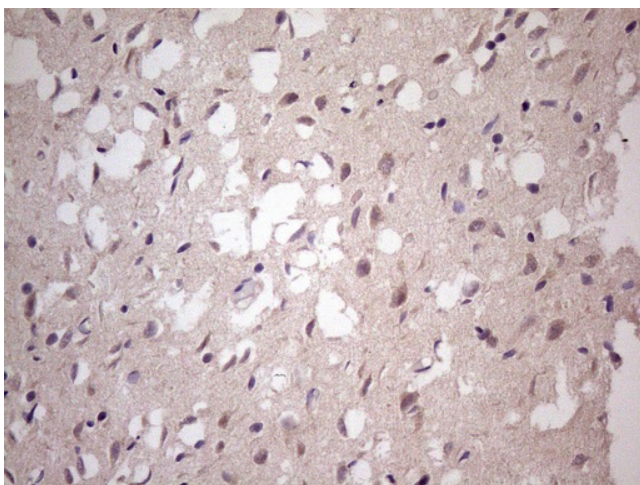
[View online »](#)

**Product images:**

HEK293T cells were transfected with the pCMV6-ENTRY control (Cat# [PS100001], Left lane) or pCMV6-ENTRY TBC1D28 (Cat# [RC211297], Right lane) cDNA for 48 hrs and lysed. Equivalent amounts of cell lysates (5 ug per lane) were separated by SDS-PAGE and immunoblotted with anti-TBC1D28 (Cat# [TA808225])(1:2000). Positive lysates [LY422046] (100ug) and [LC422046] (20ug) can be purchased separately from OriGene.



Immunohistochemical staining of paraffin-embedded Human adult heart tissue using anti-TBC1D28 mouse monoclonal antibody. (Heat-induced epitope retrieval by 1mM EDTA in 10mM Tris, pH8.5, 120°C for 3min, [TA808225]) (1:150)



Immunohistochemical staining of paraffin-embedded Human adult brain tissue using anti-TBC1D28 mouse monoclonal antibody. (Heat-induced epitope retrieval by 1mM EDTA in 10mM Tris, pH8.5, 120°C for 3min, [TA808225]) (1:150)