

## Product datasheet for **TA808224**

### Somatostatin Receptor 4 (SSTR4) Mouse Monoclonal Antibody [Clone ID: OTI2F11]

#### Product data:

Product Type:	Primary Antibodies
Clone Name:	OTI2F11
Applications:	WB
Recommended Dilution:	WB 1:2000
Reactivity:	Human, Mouse, Rat
Host:	Mouse
Isotype:	IgG1
Clonality:	Monoclonal
Immunogen:	Synthetic peptide corresponding to residues near C-terminus of human SSTR4 (NP_001043).
Formulation:	PBS (pH 7.3) containing 1% BSA, 50% glycerol and 0.02% sodium azide.
Concentration:	1 mg/ml
Purification:	Purified from mouse ascites fluids or tissue culture supernatant by affinity chromatography (protein A/G)
Conjugation:	Unconjugated
Storage:	Store at -20°C as received.
Stability:	Stable for 12 months from date of receipt.
Predicted Protein Size:	41.8 kDa
Gene Name:	somatostatin receptor 4
Database Link:	<a href="#">NP_001043</a> <a href="#">Entrez Gene 20608 Mouse</a> <a href="#">Entrez Gene 25555 Rat</a> <a href="#">Entrez Gene 6754 Human</a> <a href="#">P31391</a>
Background:	Somatostatin acts at many sites to inhibit the release of many hormones and other secretory proteins. The biologic effects of somatostatin are probably mediated by a family of G protein-coupled receptors that are expressed in a tissue-specific manner. SSTR4 is a member of the superfamily of receptors having seven transmembrane segments and is expressed in highest levels in fetal and adult brain and lung. [provided by RefSeq, Jul 2008]
Synonyms:	SS-4-R; SS4-R; SS4R

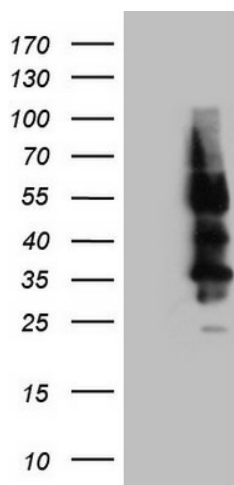


[View online »](#)

Protein Families: Druggable Genome, GPCR, Transmembrane

Protein Pathways: Neuroactive ligand-receptor interaction

### Product images:



HEK293T cells were transfected with the pCMV6-ENTRY control (Cat# [PS100001], Left lane) or pCMV6-ENTRY SSTR4 (Cat# [RC217543], Right lane) cDNA for 48 hrs and lysed. Equivalent amounts of cell lysates (5 ug per lane) were separated by SDS-PAGE and immunoblotted with anti-SSTR4 (Cat# TA808224)(1:2000).