

Product datasheet for **TA808223BM**

CDC42 binding protein kinase alpha (CDC42BPA) Mouse Monoclonal Antibody (HRP conjugated) [Clone ID: OTI7B9]

Product data:

| | |
|-------------------------|---|
| Product Type: | Primary Antibodies |
| Clone Name: | OTI7B9 |
| Applications: | WB |
| Recommended Dilution: | WB 1:2000 |
| Reactivity: | Human, Mouse, Rat |
| Host: | Mouse |
| Isotype: | IgG1 |
| Clonality: | Monoclonal |
| Immunogen: | Human recombinant protein fragment corresponding to amino acids 1419-1638 of human CDC42BPA(NP_055641) produced in E.coli. |
| Formulation: | PBS (pH 7.3) containing 1% BSA, 50% glycerol. |
| Concentration: | 0.5 mg/ml |
| Purification: | Purified from mouse ascites fluids or tissue culture supernatant by affinity chromatography (protein A/G) |
| Conjugation: | HRP |
| Storage: | Store at -20°C as received. |
| Stability: | Stable for 12 months from date of receipt. |
| Predicted Protein Size: | 185.9 kDa |
| Gene Name: | CDC42 binding protein kinase alpha |
| Database Link: | NP_055641 Entrez Gene 114116 Rat Entrez Gene 226751 Mouse Entrez Gene 8476 Human Q5VT25 |



[View online »](#)

Background:

The protein encoded by this gene is a member of the Serine/Threonine protein kinase family. This kinase contains multiple functional domains. Its kinase domain is highly similar to that of the myotonic dystrophy protein kinase (DMPK). This kinase also contains a Rac interactive binding (CRIB) domain, and has been shown to bind CDC42. It may function as a CDC42 downstream effector mediating CDC42 induced peripheral actin formation, and promoting cytoskeletal reorganization. Multiple alternatively spliced transcript variants have been described, and the full-length nature of two of them has been reported. [provided by RefSeq, Jul 2008]

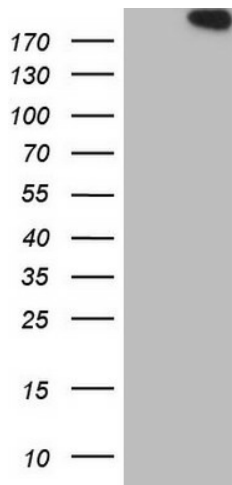
Synonyms:

MRCK; MRCKA; PK428

Protein Families:

Druggable Genome, Protein Kinase

Product images:



HEK293T cells were transfected with the pCMV6-ENTRY control (Cat# [PS100001], Left lane) or pCMV6-ENTRY CDC42BPA (Cat# [RC222587], Right lane) cDNA for 48 hrs and lysed. Equivalent amounts of cell lysates (5 ug per lane) were separated by SDS-PAGE and immunoblotted with anti-CDC42BPA (Cat# [TA808223])(1:2000). Positive lysates [LY415030] (100ug) and [LC415030] (20ug) can be purchased separately from OriGene.