

Product datasheet for **TA808223AM**

CDC42 binding protein kinase alpha (CDC42BPA) Mouse Monoclonal Antibody (Biotin conjugated) [Clone ID: OTI7B9]

Product data:

Product Type:	Primary Antibodies
Clone Name:	OTI7B9
Applications:	WB
Recommended Dilution:	WB 1:2000
Reactivity:	Human, Mouse, Rat
Host:	Mouse
Isotype:	IgG1
Clonality:	Monoclonal
Immunogen:	Human recombinant protein fragment corresponding to amino acids 1419-1638 of human CDC42BPA(NP_055641) produced in E.coli.
Formulation:	PBS (pH 7.3) containing 1% BSA, 50% glycerol and 0.02% sodium azide.
Concentration:	0.5 mg/ml
Purification:	Purified from mouse ascites fluids or tissue culture supernatant by affinity chromatography (protein A/G)
Conjugation:	Biotin
Storage:	Store at -20°C as received.
Stability:	Stable for 12 months from date of receipt.
Predicted Protein Size:	185.9 kDa
Gene Name:	CDC42 binding protein kinase alpha
Database Link:	NP_055641 Entrez Gene 114116 RatEntrez Gene 226751 MouseEntrez Gene 8476 Human Q5VT25



[View online »](#)

Background:

The protein encoded by this gene is a member of the Serine/Threonine protein kinase family. This kinase contains multiple functional domains. Its kinase domain is highly similar to that of the myotonic dystrophy protein kinase (DMPK). This kinase also contains a Rac interactive binding (CRIB) domain, and has been shown to bind CDC42. It may function as a CDC42 downstream effector mediating CDC42 induced peripheral actin formation, and promoting cytoskeletal reorganization. Multiple alternatively spliced transcript variants have been described, and the full-length nature of two of them has been reported. [provided by RefSeq, Jul 2008]

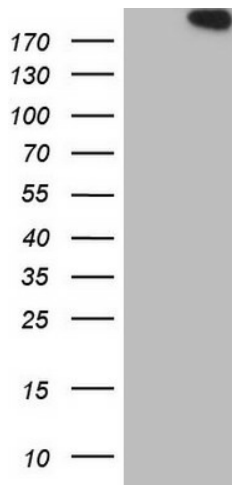
Synonyms:

MRCK; MRCKA; PK428

Protein Families:

Druggable Genome, Protein Kinase

Product images:



HEK293T cells were transfected with the pCMV6-ENTRY control (Cat# [PS100001], Left lane) or pCMV6-ENTRY CDC42BPA (Cat# [RC222587], Right lane) cDNA for 48 hrs and lysed. Equivalent amounts of cell lysates (5 ug per lane) were separated by SDS-PAGE and immunoblotted with anti-CDC42BPA (Cat# [TA808223])(1:2000). Positive lysates [LY415030] (100ug) and [LC415030] (20ug) can be purchased separately from OriGene.