

Product datasheet for **TA808218M**

KMT5A Mouse Monoclonal Antibody [Clone ID: OTI2H5]

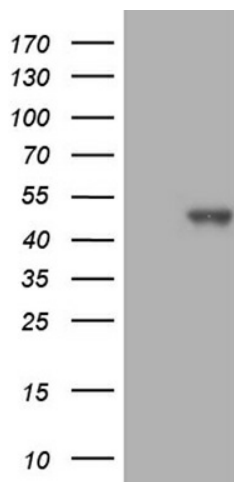
Product data:

Product Type:	Primary Antibodies
Clone Name:	OTI2H5
Applications:	WB
Recommended Dilution:	WB 1:500~2000
Reactivity:	Human
Host:	Mouse
Isotype:	IgG2a
Clonality:	Monoclonal
Immunogen:	Full length human recombinant protein of human SETD8(NP_065115) produced in E.coli.
Formulation:	PBS (pH 7.3) containing 1% BSA, 50% glycerol and 0.02% sodium azide.
Concentration:	1 mg/ml
Purification:	Purified from mouse ascites fluids or tissue culture supernatant by affinity chromatography (protein A/G)
Conjugation:	Unconjugated
Storage:	Store at -20°C as received.
Stability:	Stable for 12 months from date of receipt.
Predicted Protein Size:	39 kDa
Gene Name:	lysine methyltransferase 5A
Database Link:	NP_065115 Entrez Gene 387893 Human Q9NQR1
Synonyms:	PR-Set7; SET07; SET8; SETD8
Protein Families:	Druggable Genome
Protein Pathways:	Lysine degradation

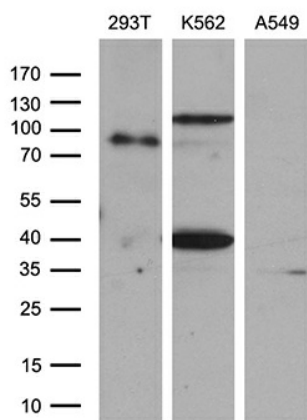


[View online »](#)

Product images:



HEK293T cells were transfected with the pCMV6-ENTRY control (Left lane) or pCMV6-ENTRY SETD8 ([RC208219], Right lane) cDNA for 48 hrs and lysed. Equivalent amounts of cell lysates (5 ug per lane) were separated by SDS-PAGE and immunoblotted with anti-SETD8 (1:2000). Positive lysates [LY402778] (100ug) and [LC402778] (20ug) can be purchased separately from OriGene.



Western blot analysis of extracts (35ug) from 3 different cell lines by using anti-SETD8 monoclonal antibody (1:500).