

## Product datasheet for **TA808213BM**

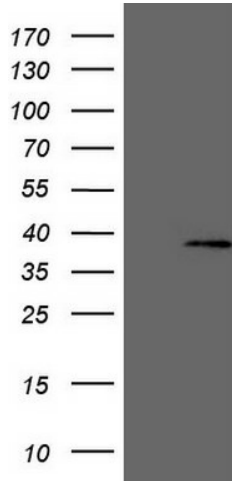
### **MED6 Mouse Monoclonal Antibody (HRP conjugated) [Clone ID: OTI3B9]**

#### **Product data:**

Product Type:	Primary Antibodies
Clone Name:	OTI3B9
Applications:	WB
Recommended Dilution:	WB 1:2000
Reactivity:	Human, Mouse, Rat
Host:	Mouse
Isotype:	IgG2a
Clonality:	Monoclonal
Immunogen:	Full length human recombinant protein of human MED6(NP_005457) produced in E.coli.
Formulation:	PBS (pH 7.3) containing 1% BSA, 50% glycerol.
Concentration:	0.5 mg/ml
Purification:	Purified from mouse ascites fluids or tissue culture supernatant by affinity chromatography (protein A/G)
Conjugation:	HRP
Storage:	Store at -20°C as received.
Stability:	Stable for 12 months from date of receipt.
Predicted Protein Size:	28.2 kDa
Gene Name:	mediator complex subunit 6
Database Link:	<a href="#">NP_005457</a> <a href="#">Entrez Gene 69792 Mouse</a> <a href="#">Entrez Gene 299180 Rat</a> <a href="#">Entrez Gene 10001 Human</a> <a href="#">O75586</a>
Synonyms:	ARC33; NY-REN-28
Protein Families:	Druggable Genome, Transcription Factors



[View online »](#)

**Product images:**

HEK293T cells were transfected with the pCMV6-ENTRY control (Cat# [PS100001], Left lane) or pCMV6-ENTRY MED6 (Cat# [RC202504], Right lane) cDNA for 48 hrs and lysed. Equivalent amounts of cell lysates (5 ug per lane) were separated by SDS-PAGE and immunoblotted with anti-MED6 (Cat# [TA808213])(1:2000). Positive lysates [LY417284] (100ug) and [LC417284] (20ug) can be purchased separately from OriGene.