

## Product datasheet for **TA808210BM**

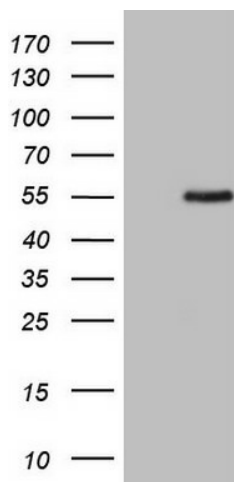
### **ZFP200 (ZNF200) Mouse Monoclonal Antibody (HRP conjugated) [Clone ID: OTI3B6]**

#### **Product data:**

|                         |   |
|-------------------------|---|
| Product Type:           | Primary Antibodies  |
| Clone Name:             | OTI3B6  |
| Applications:           | WB  |
| Recommended Dilution:   | WB 1:2000   |
| Reactivity:             | Human   |
| Host:                   | Mouse   |
| Isotype:                | IgG1  |
| Clonality:              | Monoclonal  |
| Immunogen:              | Full length human recombinant protein of human ZNF200(NP_932353) produced in E.coli.                      |
| Formulation:            | PBS (pH 7.3) containing 1% BSA, 50% glycerol.   |
| Concentration:          | 0.5 mg/ml   |
| Purification:           | Purified from mouse ascites fluids or tissue culture supernatant by affinity chromatography (protein A/G) |
| Conjugation:            | HRP   |
| Storage:                | Store at -20°C as received.   |
| Stability:              | Stable for 12 months from date of receipt.  |
| Predicted Protein Size: | 45.2 kDa  |
| Gene Name:              | zinc finger protein 200   |
| Database Link:          | <a href="#">NP_932353</a><br><a href="#">Entrez Gene 7752 Human P98182</a>                                |
| Background:             | Could have a role in spermatogenesis. [UniProtKB/Swiss-Prot Function]                                     |
| Synonyms:               | MGC45293  |
| Protein Families:       | Transcription Factors   |



[View online »](#)

**Product images:**

HEK293T cells were transfected with the pCMV6-ENTRY control (Left lane) or pCMV6-ENTRY ZNF200 ([RC208779], Right lane) cDNA for 48 hrs and lysed. Equivalent amounts of cell lysates (5 ug per lane) were separated by SDS-PAGE and immunoblotted with anti-ZNF200 (1:2000). Positive lysates [LY405074] (100ug) and [LC405074] (20ug) can be purchased separately from OriGene.