

Product datasheet for **TA808187BM**

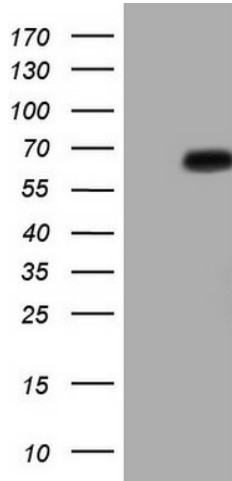
POTEG Mouse Monoclonal Antibody (HRP conjugated) [Clone ID: OTI10E12]

Product data:

| | |
|-------------------------|---|
| Product Type: | Primary Antibodies |
| Clone Name: | OTI10E12 |
| Applications: | WB |
| Recommended Dilution: | WB 1:2000 |
| Reactivity: | Human |
| Host: | Mouse |
| Isotype: | IgG1 |
| Clonality: | Monoclonal |
| Immunogen: | Full length human recombinant protein of human POTEG (NP_001005356) produced in HEK293T cell. |
| Formulation: | PBS (pH 7.3) containing 1% BSA, 50% glycerol. |
| Concentration: | 0.5 mg/ml |
| Purification: | Purified from mouse ascites fluids or tissue culture supernatant by affinity chromatography (protein A/G) |
| Conjugation: | HRP |
| Storage: | Store at -20°C as received. |
| Stability: | Stable for 12 months from date of receipt. |
| Predicted Protein Size: | 56.9 kDa |
| Gene Name: | POTE ankyrin domain family member G |
| Database Link: | NP_001005356 Entrez Gene 404785 Human Q6S5H5 |
| Synonyms: | A26C2; ACTBL1; CT104.4; POTE-14; POTE14; POTE14alpha; POTE22 |



[View online »](#)

Product images:

HEK293T cells were transfected with the pCMV6-ENTRY control (Left lane) or pCMV6-ENTRY POTEG ([RC220195], Right lane) cDNA for 48 hrs and lysed. Equivalent amounts of cell lysates (5 ug per lane) were separated by SDS-PAGE and immunoblotted with anti-POTEG (1:2000). Positive lysates [LY423696] (100ug) and [LC423696] (20ug) can be purchased separately from OriGene.