

Product datasheet for **TA808187AM**

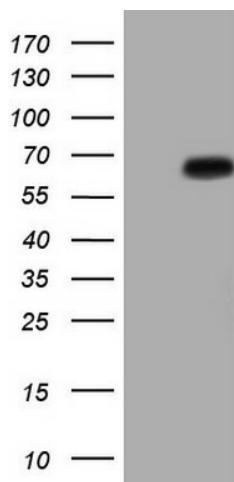
POTEG Mouse Monoclonal Antibody (Biotin conjugated) [Clone ID: OTI10E12]

Product data:

Product Type:	Primary Antibodies
Clone Name:	OTI10E12
Applications:	WB
Recommended Dilution:	WB 1:2000
Reactivity:	Human
Host:	Mouse
Isotype:	IgG1
Clonality:	Monoclonal
Immunogen:	Full length human recombinant protein of human POTEG (NP_001005356) produced in HEK293T cell.
Formulation:	PBS (pH 7.3) containing 1% BSA, 50% glycerol and 0.02% sodium azide.
Concentration:	0.5 mg/ml
Purification:	Purified from mouse ascites fluids or tissue culture supernatant by affinity chromatography (protein A/G)
Conjugation:	Biotin
Storage:	Store at -20°C as received.
Stability:	Stable for 12 months from date of receipt.
Predicted Protein Size:	56.9 kDa
Gene Name:	POTE ankyrin domain family member G
Database Link:	NP_001005356 Entrez Gene 404785 Human Q6S5H5
Synonyms:	A26C2; ACTBL1; CT104.4; POTE-14; POTE14; POTE14alpha; POTE22



[View online »](#)

Product images:

HEK293T cells were transfected with the pCMV6-ENTRY control (Left lane) or pCMV6-ENTRY POTEG ([RC220195], Right lane) cDNA for 48 hrs and lysed. Equivalent amounts of cell lysates (5 ug per lane) were separated by SDS-PAGE and immunoblotted with anti-POTEG (1:2000). Positive lysates [LY423696] (100ug) and [LC423696] (20ug) can be purchased separately from OriGene.