

Product datasheet for **TA808183**

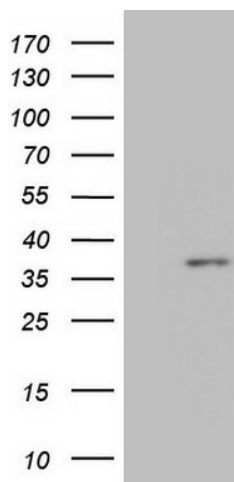
MED6 Mouse Monoclonal Antibody [Clone ID: OTI3C9]

Product data:

| | |
|-------------------------|---|
| Product Type: | Primary Antibodies |
| Clone Name: | OTI3C9 |
| Applications: | WB |
| Recommended Dilution: | WB 1:2000 |
| Reactivity: | Human, Mouse, Rat |
| Host: | Mouse |
| Isotype: | IgG1 |
| Clonality: | Monoclonal |
| Immunogen: | Full length human recombinant protein of human MED6(NP_005457) produced in E.coli. |
| Formulation: | PBS (pH 7.3) containing 1% BSA, 50% glycerol and 0.02% sodium azide. |
| Concentration: | 1 mg/ml |
| Purification: | Purified from mouse ascites fluids or tissue culture supernatant by affinity chromatography (protein A/G) |
| Conjugation: | Unconjugated |
| Storage: | Store at -20°C as received. |
| Stability: | Stable for 12 months from date of receipt. |
| Predicted Protein Size: | 28.2 kDa |
| Gene Name: | mediator complex subunit 6 |
| Database Link: | NP_005457 Entrez Gene 69792 Mouse Entrez Gene 299180 Rat Entrez Gene 10001 Human O75586 |
| Synonyms: | ARC33; NY-REN-28 |
| Protein Families: | Druggable Genome, Transcription Factors |



[View online »](#)

Product images:

HEK293T cells were transfected with the pCMV6-ENTRY control (Left lane) or pCMV6-ENTRY MED6 ([RC202504], Right lane) cDNA for 48 hrs and lysed. Equivalent amounts of cell lysates (5 ug per lane) were separated by SDS-PAGE and immunoblotted with anti-MED6 (1:2000). Positive lysates [LY417284] (100ug) and [LC417284] (20ug) can be purchased separately from OriGene.