

## Product datasheet for **TA808181M**

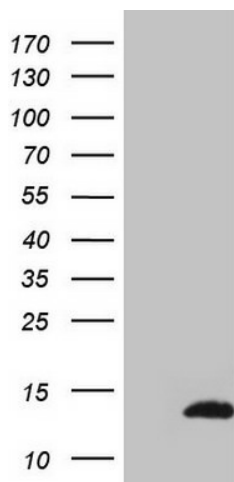
### CDC42SE2 Mouse Monoclonal Antibody [Clone ID: OTI1B2]

#### Product data:

Product Type:	Primary Antibodies
Clone Name:	OTI1B2
Applications:	WB
Recommended Dilution:	WB 1:2000
Reactivity:	Human, Mouse, Rat
Host:	Mouse
Isotype:	IgG1
Clonality:	Monoclonal
Immunogen:	Full length human recombinant protein of human CDC42SE2 (NP_064625) produced in E.coli.
Formulation:	PBS (pH 7.3) containing 1% BSA, 50% glycerol and 0.02% sodium azide.
Concentration:	1 mg/ml
Purification:	Purified from mouse ascites fluids or tissue culture supernatant by affinity chromatography (protein A/G)
Conjugation:	Unconjugated
Storage:	Store at -20°C as received.
Stability:	Stable for 12 months from date of receipt.
Predicted Protein Size:	9 kDa
Gene Name:	CDC42 small effector 2
Database Link:	<a href="#">NP_064625</a> <a href="#">Entrez Gene 72729 Mouse</a> <a href="#">Entrez Gene 691031 Rat</a> <a href="#">Entrez Gene 56990 Human</a> <a href="#">Q9NRR3</a>
Synonyms:	SPEC2
Protein Families:	Druggable Genome


[View online »](#)

## Product images:



HEK293T cells were transfected with the pCMV6-ENTRY control (Left lane) or pCMV6-ENTRY CDC42SE2 ([RC212101], Right lane) cDNA for 48 hrs and lysed. Equivalent amounts of cell lysates (5 ug per lane) were separated by SDS-PAGE and immunoblotted with anti-CDC42SE2 (1:2000). Positive lysates [LY412575] (100ug) and [LC412575] (20ug) can be purchased separately from OriGene.